

## Edmonton Alberta

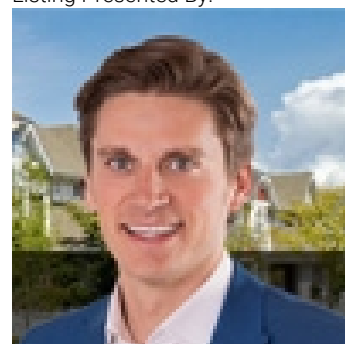
\$375,000

Executive lifestyle in this corner unit with 1071 sq ft. 2 bedrooms + Den, 2 bathrooms condo in UPTOWN ESTATES. Amazingly bright unit with 9 ft ceiling, floor to ceiling windows, open kitchen with upgraded stainless steel appliances, granite countertops throughout, engineering hardwood flooring throughout except the bathrooms with ceramic tiles, large master bedroom with a 5-piece ensuite that has a separate glass shower and a soaker tub, double sinks and large walk-in closet. Central air-conditioning, in-suite laundry and a huge balcony w/gas outlet and included with 1 underground titled parking stall. Secured building also has a fully loaded gym room, meeting room and visitor parking. Excellent location close to the Promenade, Jasper Avenue and quick access to downtown, the river valley trails and the U of A. Additional parking stall can be purchased from seller. (id:6769)

Primary Bedroom Measurements not available

Bedroom 2 Measurements not available

Listing Presented By:



Originally Listed by:  
RE/MAX River City



CREA

DDF

#230, 70 Mcleod Ave , Spruce Grove, AB,

Phone: 780-920-0550  
tyson@royallepage.ca

The property information on this website is derived from the Canadian Real Estate Association's Data Distribution Facility (DDF®). DDF® references real estate listings held by various brokerage firms and franchisees. The accuracy of information is not guaranteed and should be independently verified. The trademarks REALTOR®, REALTORS® and the REALTOR® logo are controlled by The Canadian Real Estate Association (CREA) and identify real estate professionals who are members of CREA. The trademarks MLS®, Multiple Listing Service® and the associated logos are owned by CREA and identify the quality of services provided by real estate professionals who are members of CREA.