



Edmonton Alberta

\$389,900

AMAZING LOCATION! 2014 Built Boutique luxury Condo in the heart of Strathcona. CORNER 2ND FLOOR UNIT- Walking distance to the UofA, Saskatchewan Drive and Whyte Avenue and a short trip to downtown. This bright 2 bedroom CORNER unit has tons of natural light coming from the large windows, Open Kitchen with quartz counters and huge island, 9' ceilings, Engineered hardwood floors and plenty of storage space. Titled Underground/heated secured parking. Enjoy living close to the university in a newer building! (id:6769)

Living room 3.2 m X 2.9 m

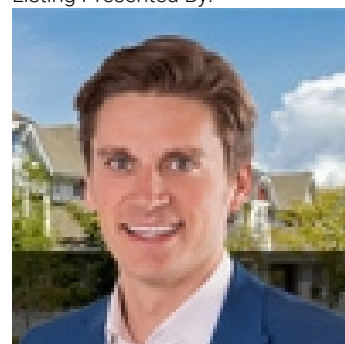
Dining room 3.2 m X 2.4 m

Kitchen 4.1 m X 3.2 m

Primary Bedroom 4.3 m X 3.1 m

Bedroom 2 3.7 m X 2.9 m

Listing Presented By:



Originally Listed by:
RE/MAX Elite



Royal

Le Page Noralta Spruce Grove

#230, 70 Mcleod Ave , Spruce Grove, AB,

Phone: 780-920-0550

Fax:

tyson@royallepage.ca

The property information on this website is derived from the Canadian Real Estate Association's Data Distribution Facility (DDF®). DDF® references real estate listings held by various brokerage firms and franchisees. The accuracy of information is not guaranteed and should be independently verified. The trademarks REALTOR®, REALTORS® and the REALTOR® logo are controlled by The Canadian Real Estate Association (CREA) and identify real estate professionals who are members of CREA. The trademarks MLS®, Multiple Listing Service® and the associated logos are owned by CREA and identify the quality of services provided by real estate professionals who are members of CREA.