



Edmonton Alberta

\$339,500

You're not just buying a condo—you're gaining a lifestyle. Picture evening hikes along the scenic river valley trails, weekends exploring the tropical gardens at the Muttart Conservatory, or enjoying the lively Folk Festival right outside your door. This address offers the perfect blend of urban comforts & natural beauty in the warm, welcoming Cloverdale community. This spacious 1679 sqft home features 3 bdrms & 3 balconies with beautiful views of the neighborhood. The primary bdrm boasts a lovely ensuite, large walk-in closet, abundant windows & a private balcony. The 2 additional bdrms are extra large & share their own balcony. The open concept living area has its own balcony, while the kitchen offers ample counter space, a center island with raised eating bar & plenty of cabinets. You'll love the big laundry room & storage, a wide underground parking for 2 small cars. Condo fees include heat, water & central air. (id:6769)

Living room 5.58 m X 3.41 m

Dining room 5.61 m X 3.41 m

Kitchen 5.77 m X 2.34 m

Primary Bedroom 5.47 m X 4.46 m

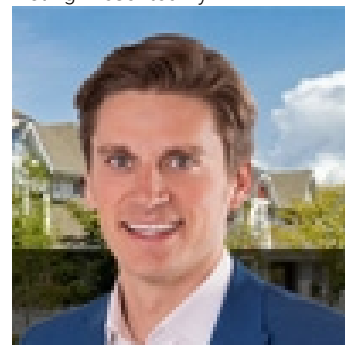
Bedroom 2 6.48 m X 3.5 m

Bedroom 3 4.23 m X 3.34 m

Laundry room Measurements not available

Storage Measurements not available

Listing Presented By:



Originally Listed by:
RE/MAX Elite

<http://www.realtyedmonton.ca/>



**Royal
Le Page Noralta Spruce Grove**

#230, 70 Mcleod Ave , Spruce
Grove, AB,

Phone: 780-920-0550

Fax:

tyson@royalpage.ca

The property information on this website is derived from the Canadian Real Estate Association's Data Distribution Facility (DDF®). DDF® references real estate listings held by various brokerage firms and franchisees. The accuracy of information is not guaranteed and should be independently verified. The trademarks REALTOR®, REALTORS® and the REALTOR® logo are controlled by The Canadian Real Estate Association (CREA) and identify real estate professionals who are members of CREA. The trademarks MLS®, Multiple Listing Service® and the associated logos are owned by CREA and identify the quality of services provided by real estate professionals who are members of CREA.