



## Fort Saskatchewan Alberta

\$479,000

Located in Westpark, this 1,534 sq. ft. two-story home is just steps from the scenic river valley, dog park, and baseball diamonds. It includes a 20' x 22' double detached garage with extra side storage, perfect for tools, bikes, or outdoor gear. Inside, the open-concept main floor features 9' ceilings, a cozy fireplace, and stylish vinyl plank flooring, creating a bright and welcoming space. The modern kitchen is a standout, boasting quartz counter tops, soft-close cabinetry, and stainless steel appliances, perfect for cooking and entertaining. A half-bath adds convenience, while the garden door leads to a sunny south-facing deck, ideal for BBQs and relaxing. Upstairs, the primary suite offers a walk-in closet and private ensuite, while two additional bedrooms share a full bath. A separate laundry room makes chores effortless. The full basement is ready for your personal touch—imagine a spacious rec room, extra bedroom, or a home gym. Central A/C ensures comfort all summer. (id:6769)

Living room 5.08 m X 4.74 m

Dining room 3.45 m X 3.44 m

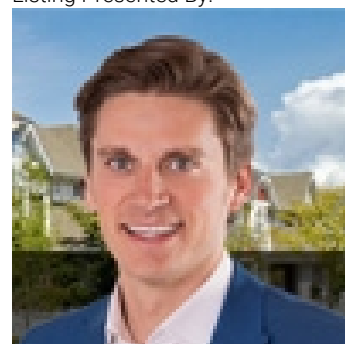
Kitchen 3.81 m X 2.89 m

Primary Bedroom 3.96 m X 4.81 m

Bedroom 2 2.84 m X 4.03 m

Bedroom 3 2.86 m X 4.04 m

Listing Presented By:



Originally Listed by:  
Lux Real Estate Inc

<http://www.ryangillen.com/>



**Royal**

**Le Page Noralta Spruce Grove**

#230, 70 Mcleod Ave , Spruce  
Grove, AB,

Phone: 780-920-0550

Fax:

tyson@royallepage.ca

The property information on this website is derived from the Canadian Real Estate Association's Data Distribution Facility (DDF®). DDF® references real estate listings held by various brokerage firms and franchisees. The accuracy of information is not guaranteed and should be independently verified. The trademarks REALTOR®, REALTORS® and the REALTOR® logo are controlled by The Canadian Real Estate Association (CREA) and identify real estate professionals who are members of CREA. The trademarks MLS®, Multiple Listing Service® and the associated logos are owned by CREA and identify the quality of services provided by real estate professionals who are members of CREA.