



Edmonton Alberta

\$534,800

Welcome home! This well appointed Bi-level/bungalow offers 2500+sqft of living space and is perfect for a growing family. Upon entering, the living room showcases a huge bay window allowing natural light to flow through to the dining room and captures the richness of the hardwood flooring. Adjacent to the dining room is the kitchen with large eating area with bay window. A large master bedroom w/2 closets, a 2nd bedroom and a 5pc bath complete this level. The lower level is bright with plenty of windows and a family room that features a wall to wall brick mantel fireplace with wood burning insert to keep everyone cozy and warm. Two more bedrooms, a 3pc. bath and laundry area finish this level. Along w/dbl attached garage this property also offers a single garage style shop perfect for add'l storage space or to convert into an studio/hobby shop. A private south facing backyard will be perfect for bbq gatherings and the large driveway will offer plenty of parking for hosting. (id:6769)

Family room 6.83 m X 4.49 m

Bedroom 3 4.13 m X 4.03 m

Bedroom 4 3.36 m X 2.74 m

Laundry room 2.97 m X 2.48 m

Storage 4.14 m X 2.43 m

Living room 5.3 m X 4.77 m

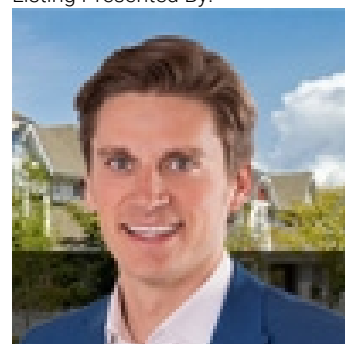
Dining room 2.76 m X 3.35 m

Kitchen 5.92 m X 3.81 m

Primary Bedroom 4.19 m X 3.59 m

Bedroom 2 4.1 m X 2.88 m

Listing Presented By:



Originally Listed by:
RE/MAX Elite

<http://www.marceltessier.com/>



CREA

DDF

#230, 70 Mcleod Ave , Spruce
Grove, AB,

Phone: 780-920-0550
tyson@royallepage.ca

The property information on this website is derived from the Canadian Real Estate Association's Data Distribution Facility (DDF®). DDF® references real estate listings held by various brokerage firms and franchisees. The accuracy of information is not guaranteed and should be independently verified. The trademarks REALTOR®, REALTORS® and the REALTOR® logo are controlled by The Canadian Real Estate Association (CREA) and identify real estate professionals who are members of CREA. The trademarks MLS®, Multiple Listing Service® and the associated logos are owned by CREA and identify the quality of services provided by real estate professionals who are members of CREA.