



Edmonton Alberta

\$439,900

Welcome to this well-kept home with FULLY FINISHED BASEMENT in the desirable community of WALKER. A great opportunity for FIRST-TIME HOMEBUYERS or INVESTORS! This east-facing property offers 3 BEDROOMS, 2.1 BATHS, and a FRONT ATTACHED SINGLE GARAGE. The main floor features a cozy living room, a functional layout, and comes with CENTRAL AIR CONDITIONING for year-round comfort. Upstairs, the spacious Primary Bedroom comes with its own ENSUITE and a good-sized walk-in closet. The Fully Finished Basement adds excellent extra living space with a large Recreation room that can also be used as a bedroom, along with a FULL WASHROOM. Step outside to enjoy the spacious west-facing backyard, perfect for relaxing or entertaining. Conveniently located close to schools, shopping, playgrounds, and all major amenities, this home offers comfort, value, and a fantastic location. A perfect blend of space, convenience & investment potential—don't miss out! (id:6769)

Recreation room 5.43 m X 8.48 m

Living room 4.62 m X 4.55 m

Dining room 2.7 m X 4.22 m

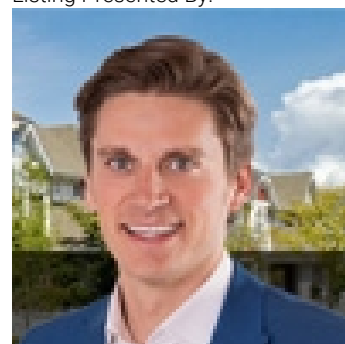
Kitchen 3.1 m X 4.22 m

Primary Bedroom 4.19 m X 5.39 m

Bedroom 2 2.93 m X 3.47 m

Bedroom 3 2.93 m X 3.45 m

Listing Presented By:



Originally Listed by:
RE/MAX Elite



Royal

Le Page Noralta Spruce Grove

#230, 70 Mcleod Ave , Spruce Grove, AB,

Phone: 780-920-0550

Fax:

tyson@royallepage.ca

The property information on this website is derived from the Canadian Real Estate Association's Data Distribution Facility (DDF®). DDF® references real estate listings held by various brokerage firms and franchisees. The accuracy of information is not guaranteed and should be independently verified. The trademarks REALTOR®, REALTORS® and the REALTOR® logo are controlled by The Canadian Real Estate Association (CREA) and identify real estate professionals who are members of CREA. The trademarks MLS®, Multiple Listing Service® and the associated logos are owned by CREA and identify the quality of services provided by real estate professionals who are members of CREA.