



Edmonton Alberta

\$399,900

BETTER THAN NEW! Meticulously maintained, this almost 1350 sq.ft. 3 Bed, 2 1/2 Bath home in SUDER GREENS is perfect for first home buyers, young professionals, and empty nesters. Freshly painted, the open floor plan features laminate flooring, NEW ROOF (2023), a neutral colour palette, a kitchen island, CENTRAL AIR CONDITIONING & a large pie-shaped lot. Front and rear landscaping, along with a cozy deck, complete this already impressive home. Located within a community close to all amenities, including schools, shopping, a future LRT, West Edmonton Mall & the Lewis Estates Golf Course, this home is the perfect blend of comfortable living. EXCELLENT VALUE! (id:6769)

Living room 3.58 m X 4.27 m

Dining room 2.3 m X 2.75 m

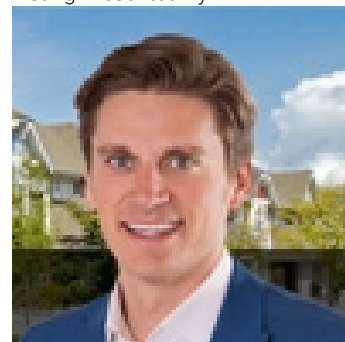
Kitchen 2.58 m X 3.26 m

Primary Bedroom 3.25 m X 4.43 m

Bedroom 2 2.97 m X 3.88 m

Bedroom 3 2.81 m X 3.83 m

Listing Presented By:



Originally Listed by:
RE/MAX Elite

<http://www.jennynarine.ca/>



Royal

Le Page Noralta Spruce Grove

#230, 70 Mcleod Ave , Spruce Grove, AB,

Phone: 780-920-0550

Fax:

tyson@royallepage.ca

The property information on this website is derived from the Canadian Real Estate Association's Data Distribution Facility (DDF®). DDF® references real estate listings held by various brokerage firms and franchisees. The accuracy of information is not guaranteed and should be independently verified. The trademarks REALTOR®, REALTORS® and the REALTOR® logo are controlled by The Canadian Real Estate Association (CREA) and identify real estate professionals who are members of CREA. The trademarks MLS®, Multiple Listing Service® and the associated logos are owned by CREA and identify the quality of services provided by real estate professionals who are members of CREA.