



Edmonton Alberta

\$284,500

Awesome condo in the beautiful neighbourhood of Belgravia. True walkable neighbourhood with U of A, LRT, coffee shops, restaurants, Whyte Ave, Rivervalley and so much more just a short walk away. This condo is modern & sleek with vinyl plank floors, white cabinets, quartz counters, energy star appliances, 2 bedrooms, 4 piece bathroom, insuite laundry, covered west facing deck, heated underground parking and the building offers an amazing roof top deck- perfect spot to entertain & enjoy long summer days & the beautiful views. The unique CONCRETE building has geothermal & solar panels. Whether you are a young professional, student or looking to downsize and retire this condo and location are for you!! Assumable mortgage opportunity at 1.96% until Dec 1, 2026. Some photos have been virtually staged. (id:6769)

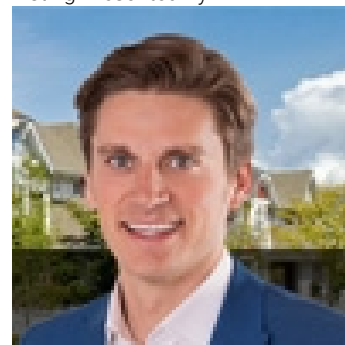
Living room 4.72 m X 2.91 m

Kitchen 3.53 m X 3.36 m

Primary Bedroom 4.17 m X 3.26 m

Bedroom 2 4.29 m X 2.73 m

Listing Presented By:



Originally Listed by:
RE/MAX Elite



Royal

Le Page Noralta Spruce Grove

#230, 70 Mcleod Ave , Spruce Grove, AB,

Phone: 780-920-0550

Fax:

tyson@royallepage.ca

The property information on this website is derived from the Canadian Real Estate Association's Data Distribution Facility (DDF®). DDF® references real estate listings held by various brokerage firms and franchisees. The accuracy of information is not guaranteed and should be independently verified. The trademarks REALTOR®, REALTORS® and the REALTOR® logo are controlled by The Canadian Real Estate Association (CREA) and identify real estate professionals who are members of CREA. The trademarks MLS®, Multiple Listing Service® and the associated logos are owned by CREA and identify the quality of services provided by real estate professionals who are members of CREA.