



Edmonton Alberta

\$539,900

24' X 22' HEATED GARAGE! STUNNINGLY FINISHED! FULLY FENCED & LANDSCAPED! HEAT PUMP! This 1690 sq ft 3 bed, 2.5 bath Landmark stunner shows a 10! Lovely front porch leads inside to your true open concept main floor w/ 9' ceilings; spacious and full of natural light! Exposed wood beam adds character, uniting the living / dining / kitchen space w/ vinyl plank flooring throughout. Massive granite island for meal prep & entertaining guests, S/S appliances, & beautiful shaker cabinetry. 2 pce bath & access to the yard. Upstairs brings a large bonus room for movie nights, upper laundry, 4 pce bath, & 3 good sized bedrooms including the primary bed w/ 4 pce ensuite & walk in closet. Basement is unfinished, but ready for adding a 4th bedroom, bath, or keep as ample storage. Tankless hot water, heat pump for heating / cooling. Nice deck for summer BBQs & gatherings w/ grass for the pup. The garage w/ electric heater fits 2 half ton trucks & perfect for your storage needs! Amazing location; don't miss this beaut! (id:6769)

Living room 4.48 m X 4.88 m

Dining room 3.46 m X 2.76 m

Kitchen 4.48 m X 3.93 m

Primary Bedroom 4.14 m X 3.8 m

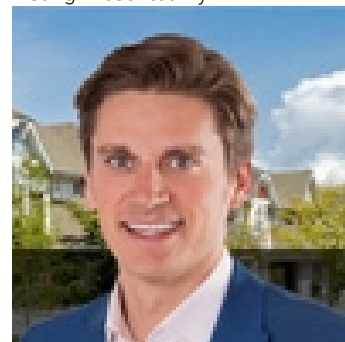
Bedroom 2 2.79 m X 4.07 m

Bedroom 3 2.89 m X 2.99 m

Bonus Room 5.77 m X 3.64 m

Laundry room 1.59 m X 1.6 m

Listing Presented By:



Originally Listed by:
RE/MAX Elite

<http://kevindoyle.remax.ca/>



Royal

Le Page Noralta Spruce Grove

#230, 70 Mcleod Ave , Spruce Grove, AB,

Phone: 780-920-0550

Fax:

tyson@royalpage.ca

The property information on this website is derived from the Canadian Real Estate Association's Data Distribution Facility (DDF®). DDF® references real estate listings held by various brokerage firms and franchisees. The accuracy of information is not guaranteed and should be independently verified. The trademarks REALTOR®, REALTORS® and the REALTOR® logo are controlled by The Canadian Real Estate Association (CREA) and identify real estate professionals who are members of CREA. The trademarks MLS®, Multiple Listing Service® and the associated logos are owned by CREA and identify the quality of services provided by real estate professionals who are members of CREA.