



Edmonton Alberta

\$175,000

A Beautifully Updated Condo in an Environmentally Thoughtful Building! This attractive building has a concrete and steel frame, which is energy efficient, fire resistant and quiet, and the geothermal heating is sustainable and affordable. This elegant unit features stainless appliances, a newer dishwasher, new laminate flooring, central air, and low E windows. The darker wood cabinets in the kitchen complement the flooring, and additional seating is found at the peninsula. The dining room connects the kitchen and living room, which has ample natural light from the private, west-facing balcony. The spacious primary bedroom sits across from the 4-pc bathroom, and an in-suite laundry offers convenient extra storage. Underground, heated parking keeps your vehicle secure, and an exercise room provides a great place to work out. Guinevere Park, with its scenic boardwalks, fountains, and viewing decks overlooking the water, offers a chance to experience a natural setting just a few blocks away. (id:6769)

Living room 3.65 m X 3.7 m

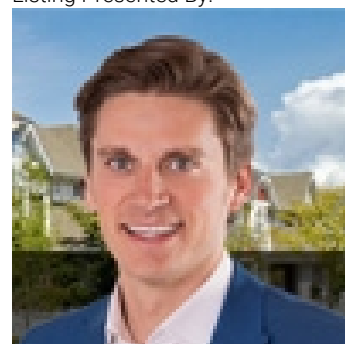
Dining room 3.65 m X 1.5 m

Kitchen 2.45 m X 2.45 m

Primary Bedroom 3.05 m X 3.35 m

Laundry room 1.4 m X 1.1 m

Listing Presented By:



Originally Listed by:
RE/MAX Elite

<http://www.thegabouryteam.com/>



CREA

DDF

#230, 70 Mcleod Ave , Spruce
Grove, AB,

Phone: 780-920-0550
tyson@royallepage.ca

The property information on this website is derived from the Canadian Real Estate Association's Data Distribution Facility (DDF®). DDF® references real estate listings held by various brokerage firms and franchisees. The accuracy of information is not guaranteed and should be independently verified. The trademarks REALTOR®, REALTORS® and the REALTOR® logo are controlled by The Canadian Real Estate Association (CREA) and identify real estate professionals who are members of CREA. The trademarks MLS®, Multiple Listing Service® and the associated logos are owned by CREA and identify the quality of services provided by real estate professionals who are members of CREA.