



Fort Saskatchewan Alberta

\$279,500

This immaculate 2-bedroom end unit is move-in ready and beautifully updated, offering style, space, and a superb location close to shopping, walking trails, and the river valley. A massive wraparound covered deck extends your living space—ideal for morning coffee or evening visits. Inside, enjoy fresh paint throughout, updated kitchen cabinets and countertops, and newer appliances including fridge, stove, microwave, dishwasher, and in-suite laundry. Elegant barn doors, modern lighting, new window coverings, and built-in shelving add a stylish, functional touch. You'll love the durable laminate flooring, abundance of natural light, and the peace of mind that comes with new windows and siding. Located in a secure, well-managed 50+ building with fantastic amenities: heated underground parking with car wash, storage cage, social rooms, guest suite, elevator, and more. Quiet, comfortable, and full of extras—this is adult living at its best. (id:6769)

Living room 4.3 m X 4 m

Dining room 2.96 m X 3.29 m

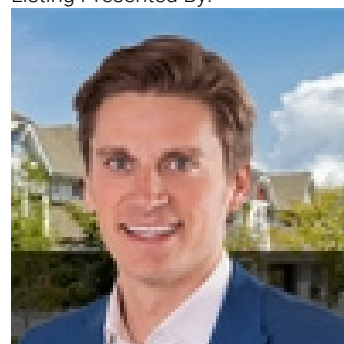
Kitchen 2.94 m X 3.43 m

Primary Bedroom 4.04 m X 3.63 m

Bedroom 2 3.33 m X 3.6 m

Laundry room 1.46 m X 2.9 m

Listing Presented By:



Originally Listed by:
Real Broker

<http://www.darylappleton.ca/>



Royal

Le Page Noralta Spruce Grove

#230, 70 Mcleod Ave , Spruce Grove, AB,

Phone: 780-920-0550

Fax:

tyson@royallepage.ca

The property information on this website is derived from the Canadian Real Estate Association's Data Distribution Facility (DDF®). DDF® references real estate listings held by various brokerage firms and franchisees. The accuracy of information is not guaranteed and should be independently verified. The trademarks REALTOR®, REALTORS® and the REALTOR® logo are controlled by The Canadian Real Estate Association (CREA) and identify real estate professionals who are members of CREA. The trademarks MLS®, Multiple Listing Service® and the associated logos are owned by CREA and identify the quality of services provided by real estate professionals who are members of CREA.