



Edmonton Alberta

\$459,800

Beautifully maintained half duplex located in Rosenthal. The main level allows natural light & features wide vinyl planking throughout, an open concept kitchen/living space with a large island/eating bar, granite countertops, SS appliances, walk through pantry & kitchen nook with access onto your deck & large fenced backyard w/ privacy with no rear neighbours. Main level complete with 2pc bathroom & mudroom. This 3 bedroom home has a spacious primary bedroom & includes a 2 walk-in closets, a full ensuite with an oversized walk-in shower. 2nd level complete with 2 well-sized bedrooms, a second 4 piece bathroom & upstairs laundry. Other features include a double attached garage, plenty of storage, higher energy mechanical including a tankless hot water for a lower utility bill. This home is moments away from Lewis Estates golf course, walking distance to parks, schools, & walking trails. Close distance to WEM, Anthony Henday & the Whitemud with access to all your amenities in minutes. A West Edmonton gem! (id:6769)

Living room 4.1 m X 3.8 m

Dining room 2.67 m X 2.75 m

Kitchen 4.28 m X 2.58 m

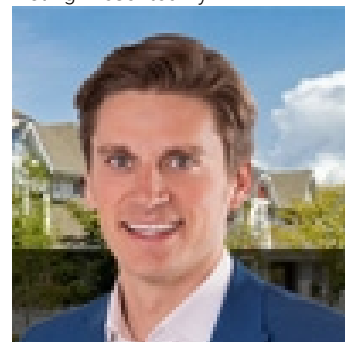
Primary Bedroom 4.27 m X 3.59 m

Bedroom 2 2.76 m X 3.53 m

Bedroom 3 2.72 m X 3.78 m

Laundry room Measurements not available

Listing Presented By:



Originally Listed by:
RE/MAX Elite

<http://www.alangee.com/>



CREA

DDF

#230, 70 Mcleod Ave , Spruce Grove, AB,

Phone: 780-920-0550
tyson@royallepage.ca

The property information on this website is derived from the Canadian Real Estate Association's Data Distribution Facility (DDF®). DDF® references real estate listings held by various brokerage firms and franchisees. The accuracy of information is not guaranteed and should be independently verified. The trademarks REALTOR®, REALTORS® and the REALTOR® logo are controlled by The Canadian Real Estate Association (CREA) and identify real estate professionals who are members of CREA. The trademarks MLS®, Multiple Listing Service® and the associated logos are owned by CREA and identify the quality of services provided by real estate professionals who are members of CREA.