



Sherwood Park Alberta

\$449,900

Enjoy a connected and effortless lifestyle in Salisbury Village! Trails, walkways, parks, nearby schools and easy access to restaurants is everything you need. This 'Dover' single family home offers the perfect blend of comfort and style. Spanning approx. 1676 SQFT, this home offers a thoughtfully designed layout and modern features. As you step inside, you'll be greeted by an inviting main floor that integrates the living, dining, and kitchen areas + a den. Abundant natural light flowing through large windows creating a warm atmosphere for daily living and entertaining. Upstairs, you'll find a flex space & 3 spacious bedrooms that provide comfortable retreats for the entire family. The primary bedroom is a true oasis, complete with an en-suite bathroom for added convenience. There is also a side entrance which adds more possibilities. HOME IS NOW COMPLETE!! (id:6769)

Living room 3.38 m X 3.47 m

Dining room 2.91 m X 3.36 m

Kitchen 3.03 m X 4.6 m

Den 2.8 m X 2.73 m

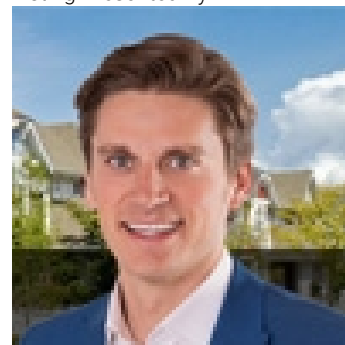
Primary Bedroom 3.53 m X 3.51 m

Bedroom 2 2.79 m X 3.07 m

Bedroom 3 2.91 m X 2.96 m

Bonus Room 2.17 m X 3.65 m

Listing Presented By:



Originally Listed by:
Century 21 All Stars Realty Ltd

<http://www.michaelsells.ca/>



CREA

DDF

#230, 70 Mcleod Ave , Spruce
Grove, AB,

Phone: 780-920-0550
tyson@royallepage.ca

The property information on this website is derived from the Canadian Real Estate Association's Data Distribution Facility (DDF®). DDF® references real estate listings held by various brokerage firms and franchisees. The accuracy of information is not guaranteed and should be independently verified. The trademarks REALTOR®, REALTORS® and the REALTOR® logo are controlled by The Canadian Real Estate Association (CREA) and identify real estate professionals who are members of CREA. The trademarks MLS®, Multiple Listing Service® and the associated logos are owned by CREA and identify the quality of services provided by real estate professionals who are members of CREA.