



Edmonton Alberta

\$430,000

NO CONDO FEES!! ATTENTION first time buyer's, we have the perfect property for you in the desirable neighbourhood of Glenriding! CORNER UNIT, PRIVATE BACKYARD, DOUBLE DETACHED GARAGE and an unfinished basement. Walking in the front door, you are greeted with lots of natural light, a good sized landing area and closet, living space, 2pc bath, dining room and large kitchen. On the second floor you will find 2 bedrooms, full bathroom, large master bedroom and a 4 pc En Suite bath. Enjoy long summers on your private back deck and fully landscaped yard. Located close to Schools, walking paths, Restaurants, Grocery stores and shopping centers. Easy access to the city, don't miss out! (id:6769)

Living room 4.4 m X 4.4 m

Dining room 4 m X 3.4 m

Kitchen 3.3 m X 2.7 m

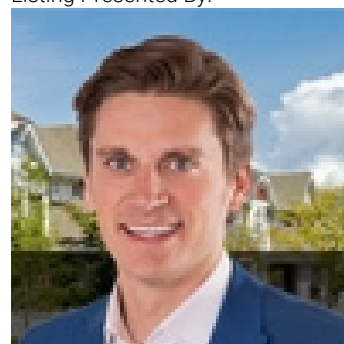
Primary Bedroom 3.9 m X 3.3 m

Bedroom 2 2.9 m X 2.9 m

Bedroom 3 2.7 m X 2.5 m

Laundry room 1.7 m X 1.6 m

Listing Presented By:



Originally Listed by:
RE/MAX Elite



CREA

DDF

#230, 70 Mcleod Ave , Spruce Grove, AB,

Phone: 780-920-0550
tyson@royallepage.ca

The property information on this website is derived from the Canadian Real Estate Association's Data Distribution Facility (DDF®). DDF® references real estate listings held by various brokerage firms and franchisees. The accuracy of information is not guaranteed and should be independently verified. The trademarks REALTOR®, REALTORS® and the REALTOR® logo are controlled by The Canadian Real Estate Association (CREA) and identify real estate professionals who are members of CREA. The trademarks MLS®, Multiple Listing Service® and the associated logos are owned by CREA and identify the quality of services provided by real estate professionals who are members of CREA.