



Edmonton Alberta

\$678,800

Welcome to 229 Heath Road in prestigious community of Henderson Estates, where charm, character & warmth welcome you home. This inviting 2126 sq ft 2storey 5bed-4bath-home offers a thoughtful layout with vaulted ceilings & an open to below design centered around a striking circular staircase. Upstairs, three beds & a cozy loft overlooking the living room create perfect spaces for rest, work or quiet moments. Large windows on both sides fill the home with natural light, highlighting a spacious living room & raised dining area flowing into the kitchen & second family room, which overlook the beautifully landscaped, private south-facing backyard with a large deck & mature trees, offering a peaceful retreat for summer evenings. The primary bed features an ensuite with skylight, while 2 other beds provide space for family. As a bonus, the basement includes 2 beds, full bath & rec or gym area for flexibility. Near river valley trails, schools, parks & shopping, this is a place to proudly call home. (id:6769)

Bedroom 4 Measurements not available

Bedroom 5 Measurements not available

Living room 5.19 m X 3.94 m

Dining room 4.08 m X 3.94 m

Kitchen 6.85 m X 4.61 m

Family room 4.1 m X 4.35 m

Laundry room 1.96 m X 2.62 m

Breakfast Measurements not available

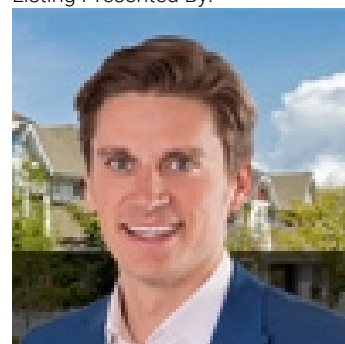
Primary Bedroom 4.23 m X 4.25 m

Bedroom 2 3.1 m X 3.19 m

Bedroom 3 3.77 m X 3.19 m

Loft 3.01 m X 2.76 m

Listing Presented By:



Originally Listed by:
RE/MAX Elite

<http://www.realtyedmonton.ca/>



**Royal
Le Page Noralta Spruce Grove**

#230, 70 Mcleod Ave , Spruce
Grove, AB,

Phone: 780-920-0550
Fax:
tyson@royallepage.ca

The property information on this website is derived from the Canadian Real Estate Association's Data Distribution Facility (DDF®). DDF® references real estate listings held by various brokerage firms and franchisees. The accuracy of information is not guaranteed and should be independently verified. The trademarks REALTOR®, REALTORS® and the REALTOR® logo are controlled by The Canadian Real Estate Association (CREA) and identify real estate professionals who are members of CREA. The trademarks MLS®, Multiple Listing Service® and the associated logos are owned by CREA and identify the quality of services provided by real estate professionals who are members of CREA.