



Edmonton Alberta

\$568,000

One look will do!! Quality built by Landmark Homes. From the moment you walk in you will feel at home. Bright main floor that features a bedroom and full bath. The chef in the family will love the kitchen with upgrades including full height & soft-close cabinetry, quartz countertops, Energy Star STAINLESS STEEL APPLIANCES & a walk-in pantry. Enjoy the electric fireplace in living room, perfect for entertaining. Upper level has a bonus room, laundry room, 3 bedrooms, the primary bedroom has a 3 piece ensuite and walk-in closet. Many features throughout including: A side entrance, 9' ceilings, tankless hot water heater, high velocity heating system, and triple pane windows. Located close to all amenities! A must to see!! (id:6769)

Living room 4.08 m X 2.83 m

Dining room 3.26 m X 1.83 m

Kitchen 4.11 m X 3.11 m

Bedroom 4 3.51 m X 2.93 m

Primary Bedroom 3.72 m X 3.63 m

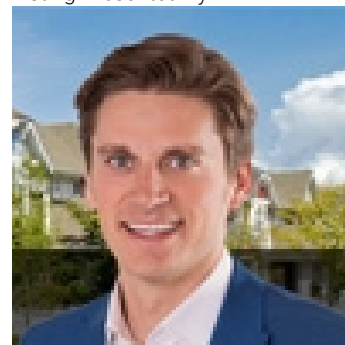
Bedroom 2 3.11 m X 2.9 m

Bedroom 3 2.77 m X 2.71 m

Bonus Room 3.14 m X 2.77 m

Laundry room 1.4 m X 1.1 m

Listing Presented By:



Originally Listed by:
RE/MAX Elite

<http://www.alangee.com/>



**Royal
Le Page Noralta Spruce Grove**

#230, 70 Mcleod Ave , Spruce
Grove, AB,

Phone: 780-920-0550
Fax:
tyson@royalpage.ca

The property information on this website is derived from the Canadian Real Estate Association's Data Distribution Facility (DDF®). DDF® references real estate listings held by various brokerage firms and franchisees. The accuracy of information is not guaranteed and should be independently verified. The trademarks REALTOR®, REALTORS® and the REALTOR® logo are controlled by The Canadian Real Estate Association (CREA) and identify real estate professionals who are members of CREA. The trademarks MLS®, Multiple Listing Service® and the associated logos are owned by CREA and identify the quality of services provided by real estate professionals who are members of CREA.