



Edmonton Alberta

\$230,000

* HERMITAGE PARK VIEWS *CENTRAL AIR CONDITIONING * UNDERGROUND PARKING * Imagine yourself living in this gorgeous 2 bed / 2 bath condo. The Ridge at Hermitage is a well maintained and inviting adult condominium. Have your morning coffee on your balcony with amazing southeast facing views over the River Valley and Hermitage Park with its endless walking trails and bike paths. The sunrises are unforgettable! Your unit has central air conditioning to keep you cool during the hot summer days. It features two good sized bedrooms with an ensuite in the primary bedroom. There is an oversized laundry/storage room with a stacked washer/dryer and the balcony has a natural gas BBQ hookup. You will be proud to show your guests the exercise room with steam room, the social room with pool table, the library with books as well as puzzles. Also included is one heated underground parking stall with a storage cage and a car wash bay! Don't miss out on owning a condo that you'll be very happy to own for many years to come! (id:6769)

Living room 3.6 m X 6.82 m

Dining room 4.69 m X 2.03 m

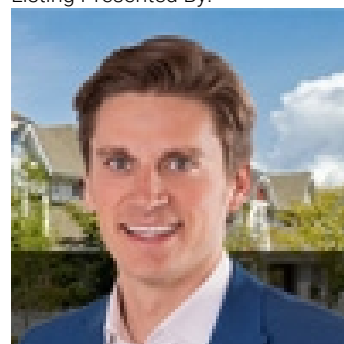
Kitchen 4.69 m X 2.56 m

Primary Bedroom 3.39 m X 4.94 m

Bedroom 2 2.82 m X 5.07 m

Laundry room 1.54 m X 2.72 m

Listing Presented By:



Originally Listed by:
RE/MAX Elite

<https://hermanhelps.ca/>



CREA

DDF

#230, 70 Mcleod Ave , Spruce Grove, AB,

Phone: 780-920-0550
tyson@royallepage.ca

The property information on this website is derived from the Canadian Real Estate Association's Data Distribution Facility (DDF®). DDF® references real estate listings held by various brokerage firms and franchisees. The accuracy of information is not guaranteed and should be independently verified. The trademarks REALTOR®, REALTORS® and the REALTOR® logo are controlled by The Canadian Real Estate Association (CREA) and identify real estate professionals who are members of CREA. The trademarks MLS®, Multiple Listing Service® and the associated logos are owned by CREA and identify the quality of services provided by real estate professionals who are members of CREA.