



Fort Saskatchewan Alberta

\$159,500

Bright and Sunny South facing unit with plenty of windows for an abundance of natural light. Garden door off the eat-in Kitchen to your own private balcony. Kitchen includes Fridge and Stove. Versatile suite featuring TWO Bedrooms or can be used as a ONE Bedroom plus TV Room or Parlour in Second Bedroom - you choose. Large storage area in the suite plus spacious 3 piece bath with wide door ideal for wheelchair or walker accessibility. Total condo fee including the Meal plan is broken down as follows: \$670.80 condo fee which includes Heat-Water, Cable Package, Insurance, Exterior Maintenance to Building, Reserve Fund and access to all amenities in building PLUS \$390 per month for One Meal per day - Medical pendant for 24 monitoring and Bi-Monthly Housekeeping and Laundry Service Total \$1,060.80. Many amenities in the Fort Gardens at Southfort Bend such as: Restaurant - Social Programs - Billiards - Shuffleboard - Craft room - Social rooms and 4 Guest Suites available for your company. 15 day possession. (id:6769)

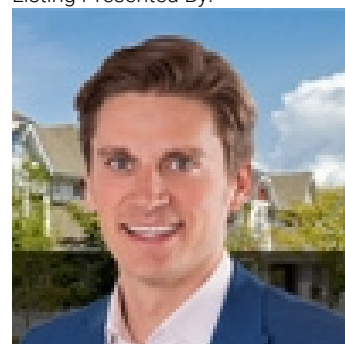
Living room 3.34 m X 3.23 m

Kitchen 3.74 m X 2.41 m

Primary Bedroom 5.1 m X 2.93 m

Bedroom 2 3.98 m X 2.78 m

Listing Presented By:



Originally Listed by:
Royal LePage Noralta Real Estate

<http://www.sharpehomes.ca/>



CREA

DDF

#230, 70 Mcleod Ave , Spruce
Grove, AB,

Phone: 780-920-0550
tyson@royallepage.ca

The property information on this website is derived from the Canadian Real Estate Association's Data Distribution Facility (DDF®). DDF® references real estate listings held by various brokerage firms and franchisees. The accuracy of information is not guaranteed and should be independently verified. The trademarks REALTOR®, REALTORS® and the REALTOR® logo are controlled by The Canadian Real Estate Association (CREA) and identify real estate professionals who are members of CREA. The trademarks MLS®, Multiple Listing Service® and the associated logos are owned by CREA and identify the quality of services provided by real estate professionals who are members of CREA.