



Edmonton Alberta

\$186,000

Park Place condo in desirable neighbourhood of Eau Claire. This 2 bedroom 2 bath unit is bright and spacious with a west facing patio door and balcony. Primary bedroom is spacious with ensuite and walk in closet. This unit also boast in-suite laundry, assigned parking stall and ample of visitor parking. This complex is within walking distance to all amenities, shopping public transportation, parks and much more. (id:6769)

Living room 3.4 m X 4.11 m

Dining room 1.67 m X 1.97 m

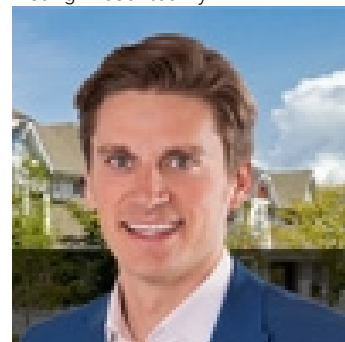
Kitchen 3.13 m X 2.5 m

Primary Bedroom 4.39 m X 3.34 m

Bedroom 2 3.42 m X 3.01 m

Laundry room 1.41 m X 1.96 m

Listing Presented By:



Originally Listed by:
RE/MAX Elite

<http://www.nadiaoaman.com/>



CREA

DDF

#230, 70 Mcleod Ave , Spruce
Grove, AB,

Phone: 780-920-0550
tyson@royallepage.ca

The property information on this website is derived from the Canadian Real Estate Association's Data Distribution Facility (DDF®). DDF® references real estate listings held by various brokerage firms and franchisees. The accuracy of information is not guaranteed and should be independently verified. The trademarks REALTOR®, REALTORS® and the REALTOR® logo are controlled by The Canadian Real Estate Association (CREA) and identify real estate professionals who are members of CREA. The trademarks MLS®, Multiple Listing Service® and the associated logos are owned by CREA and identify the quality of services provided by real estate professionals who are members of CREA.