



Edmonton Alberta

\$299,990

STYLISH 3-STOREY TOWNHOME IN HIGHLY DESIRABLE GRIESBACH! Located in one of Edmonton's most desirable communities, known for its beautiful parks, walking trails, lakes, and unmatched charm, this well-designed home offers both comfort and functionality with low-maintenance living. The ground level features a versatile flex space, perfect for a home office, gym, or kids' play area, along with a convenient 2-piece bath and access to the single attached garage. The open-concept main floor showcases a modern kitchen, spacious dining area, and bright living room, ideal for everyday living and entertaining. Upstairs, you'll find 2 bedrooms including a primary retreat with a 3-piece ensuite, plus a full 4-piece bath and convenient upper-level laundry. A perfect blend of style, space, and location! SOME PHOTOS ARE VIRTUALLY STAGED. (id:6769)

Living room 4.36 m X 4.1 m

Dining room 3.74 m X 3.23 m

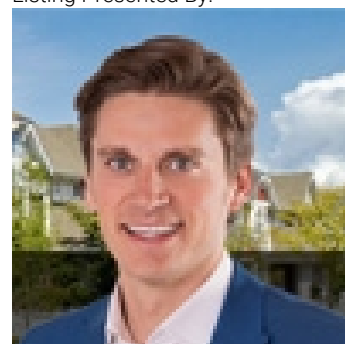
Kitchen 3.79 m X 2.67 m

Primary Bedroom 3.66 m X 3.43 m

Bedroom 2 4.37 m X 3 m

Laundry room Measurements not available

Listing Presented By:



Originally Listed by:
Century 21 All Stars Realty Ltd

<http://www.michaelsells.ca/>



**Royal
Le Page Noralta Spruce Grove**

#230, 70 Mcleod Ave , Spruce
Grove, AB,

Phone: 780-920-0550
Fax:
tyson@royallepage.ca

The property information on this website is derived from the Canadian Real Estate Association's Data Distribution Facility (DDF®). DDF® references real estate listings held by various brokerage firms and franchisees. The accuracy of information is not guaranteed and should be independently verified. The trademarks REALTOR®, REALTORS® and the REALTOR® logo are controlled by The Canadian Real Estate Association (CREA) and identify real estate professionals who are members of CREA. The trademarks MLS®, Multiple Listing Service® and the associated logos are owned by CREA and identify the quality of services provided by real estate professionals who are members of CREA.