



## Rural Leduc County Alberta

\$835,000

IMPECCABLY WELL MAINTAINED ACREAGE! SHORT DRIVE TO BEAUMONT & LEDUC! PRIDE OF OWNERSHIP! TREED & PRIVATE! Searching for that mature acreage filled with love and care? This 1649 sq ft 3 bed, 2 bath bungalow on 3 acres shows a 10 & is ideal for those looking for more space to roam! Tons of upgrades over the years, feat: lifetime metal roof (2016), triple pane windows (20/21), gemstone lighting, metal gate, eavestroughs (2022), new window coverings, paint, septic mound / pump upgrade (2023), house / garage insulation & basement spray ins, new deck, pot lighting, mudjacking, & more! PAVED TO THE DRIVEWAY w/ stunning curb appeal, leads to your 25' x 28' heated oversized garage w/ newer LED lighting & 220V power! Inside brings a well designed floor plan, w/ vaulted living / dining space with tons of natural light! Spacious kitchen & large island, 4 pce bath, 3 beds up including the primary w/ 4 pce ensuite. Basement is unfinished; develop to suit! Additional detached garage, fenced dog run area; a must see! (id:6769)

Living room 5.31 m X 4.25 m

Dining room 4.12 m X 2.42 m

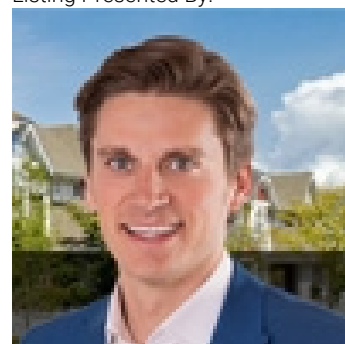
Kitchen 3.65 m X 4.44 m

Primary Bedroom 5.38 m X 4.31 m

Bedroom 2 3.5 m X 3.23 m

Bedroom 3 4.69 m X 2.72 m

Listing Presented By:



Originally Listed by:  
RE/MAX Elite

<http://kevindoyle.remax.ca/>



CREA

DDF

#230, 70 Mcleod Ave , Spruce Grove, AB,

Phone: 780-920-0550  
tyson@royallepage.ca

The property information on this website is derived from the Canadian Real Estate Association's Data Distribution Facility (DDF®). DDF® references real estate listings held by various brokerage firms and franchisees. The accuracy of information is not guaranteed and should be independently verified. The trademarks REALTOR®, REALTORS® and the REALTOR® logo are controlled by The Canadian Real Estate Association (CREA) and identify real estate professionals who are members of CREA. The trademarks MLS®, Multiple Listing Service® and the associated logos are owned by CREA and identify the quality of services provided by real estate professionals who are members of CREA.