



Edmonton Alberta

\$2,995,000

ONE OF A KIND! Former Birkholz showhome! This architecturally designed masterpiece has been developed with the utmost attention to detail, quality finishing, and exceptional craftsmanship! Located on prestigious Windermere Drive, this extraordinary estate home offers over 8000 sqft of total living space and sits upon a very secluded 16,000+ sqft lot. Features include: 4 bed/6 bath, 10'/11' ceilings, quartz/granite, exercise room, studio/library, theatre room, custom wet bar w/wine room, butler kitchen, custom teak cabinetry, 5 white oak flooring, double sided fireplace, custom elevator, Wolf/Subzero appliances, state of the art home automation/security system, five car garage w/man cave attached, and much more! Outside is the low maintenance and private yard featuring a gorgeous boulder retaining wall. Truly unparalleled! It is very rare to have a home such as this present itself! (id:6769)

Family room 5.7 m X 5.54 m

Bedroom 3 3.38 m X 6.09 m

Bedroom 4 3.65 m X 4.02 m

Media 4.6 m X 5.54 m

Library 5.15 m X 3.99 m

Recreation room 7.62 m X 5.91 m

Living room 5.77 m X 6.52 m

Dining room 5.77 m X 4.14 m

Kitchen 6.27 m X 4.89 m

Den 3.21 m X 4.28 m

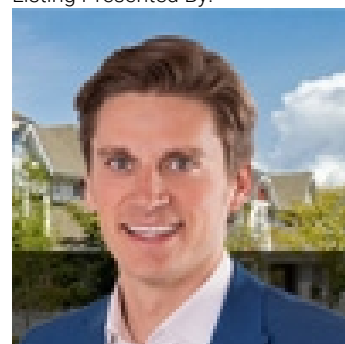
Primary Bedroom 4.47 m X 6.2 m

Laundry room 2.29 m X 3.69 m

Games room 4.26 m X 5.04 m

Bedroom 2 3.11 m X 3.79 m

Listing Presented By:



Originally Listed by:
RE/MAX Elite

<http://ryanlauber.com/>



Royal

Le Page Noralta Spruce Grove

#230, 70 Mcleod Ave , Spruce
Grove, AB,

Phone: 780-920-0550

Fax:

tyson@royallepage.ca

The property information on this website is derived from the Canadian Real Estate Association's Data Distribution Facility (DDF®). DDF® references real estate listings held by various brokerage firms and franchisees. The accuracy of information is not guaranteed and should be independently verified. The trademarks REALTOR®, REALTORS® and the REALTOR® logo are controlled by The Canadian Real Estate Association (CREA) and identify real estate professionals who are members of CREA. The trademarks MLS®, Multiple Listing Service® and the associated logos are owned by CREA and identify the quality of services provided by real estate professionals who are members of CREA.