



Edmonton Alberta

\$351,800

Welcome to this lovely townhouse in Laurel Landing! This is a property for first-time home buyers & investors. This 3 bedroom end unit boasts lots of natural light, an open concept and wide-plank flooring throughout the main level. The kitchen is spacious with stainless steel appliances, granite counters, walk-in pantry, subway tile backsplash and an island with eating bar. The upper level offers 3 bedrooms: the primary including a 3 piece ensuite and a large walk-in closet. Lower level has an attached double car garage and mudroom great for the cold winters. Plus there is a desirable low maintenance fenced-in yard to enjoy entertaining in the warmer months. Higher energy efficiency w/tankless hot water & heat recapture for a lower utility bill. This well maintained complex offers visitor parking and is walking distance to tons of amenities. Located close to shopping, a community playground, community league, newer rec centre, schools and public transit. (id:6769)

Living room 3.48 m X 4.06 m

Dining room 2.4 m X 4.11 m

Kitchen 4.11 m X 2.75 m

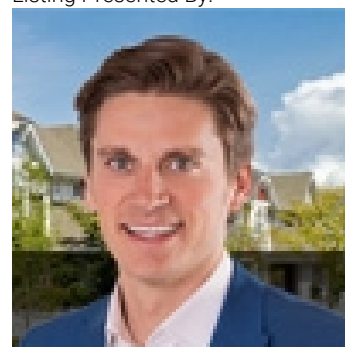
Laundry room Measurements not available

Primary Bedroom 2.95 m X 4 m

Bedroom 2 2.69 m X 3.08 m

Bedroom 3 2.41 m X 3.61 m

Listing Presented By:



Originally Listed by:
RE/MAX Elite

<http://www.alangee.com/>



CREA

DDF

#230, 70 Mcleod Ave , Spruce
Grove, AB,

Phone: 780-920-0550
tyson@royallepage.ca

The property information on this website is derived from the Canadian Real Estate Association's Data Distribution Facility (DDF®). DDF® references real estate listings held by various brokerage firms and franchisees. The accuracy of information is not guaranteed and should be independently verified. The trademarks REALTOR®, REALTORS® and the REALTOR® logo are controlled by The Canadian Real Estate Association (CREA) and identify real estate professionals who are members of CREA. The trademarks MLS®, Multiple Listing Service® and the associated logos are owned by CREA and identify the quality of services provided by real estate professionals who are members of CREA.