



Fort Saskatchewan Alberta

\$544,750

This beautiful 3-bedroom, 2.5-bathroom two-story home offers the perfect blend of comfort and style. Step inside to an airy, open floor plan where the living, dining, and kitchen spaces flow seamlessly together—ideal for entertaining or cozy nights in. Large windows bathe the main level in natural light, highlighting the inviting living area, modern kitchen with ample cabinetry, and a charming breakfast nook. A convenient half bath completes this level. Upstairs, the primary suite is a true retreat, featuring a private en-suite and walk-in closet. Two additional spacious bedrooms share a full bath, making this home perfect for families or guests. Outside, the private backyard is ready for BBQs, gardening, or quiet relaxation. Don't miss this warm and welcoming home—it's move-in ready and waiting for you! (id:6769)

Dining room Measurements not available

Kitchen Measurements not available

Family room Measurements not available

Living room Measurements not available

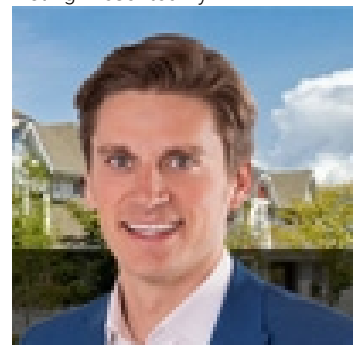
Primary Bedroom Measurements not available

Bedroom 2 Measurements not available

Bedroom 3 Measurements not available

Bonus Room Measurements not available

Listing Presented By:



Originally Listed by:
Exp Realty



Royal

Le Page Noralta Spruce Grove

#230, 70 Mcleod Ave , Spruce
Grove, AB,

Phone: 780-920-0550

Fax:

tyson@royallepage.ca

The property information on this website is derived from the Canadian Real Estate Association's Data Distribution Facility (DDF®). DDF® references real estate listings held by various brokerage firms and franchisees. The accuracy of information is not guaranteed and should be independently verified. The trademarks REALTOR®, REALTORS® and the REALTOR® logo are controlled by The Canadian Real Estate Association (CREA) and identify real estate professionals who are members of CREA. The trademarks MLS®, Multiple Listing Service® and the associated logos are owned by CREA and identify the quality of services provided by real estate professionals who are members of CREA.