



Leduc Alberta

\$399,900

TURNKEY BUNGALOW! TONS OF UPDATES! Looking for that illusive move in ready bungalow in Corinthia Park? This 1221 sq ft, 4 bed, 2.5 bath home shows well & ready for a new family! Feat: newer shingles, vinyl siding & windows, soffit & fascia, hardwood & vinyl plank flooring, pot lighting, kitchen, furnace & HWT, new air conditioner, basement facelift, & more! Stunning open concept entryway provides a spacious living room connecting to your gorgeous open concept kitchen / dining space w/ large island! Tons of cabinets, stylish backsplash, 3 good sized bedrooms, including the primary bed w/ 2 pce ensuite. 4 pce bath & linen storage. Side entryway leads to the fully finished basement. Huge rec room (or add a 5th bedroom), theatre space / den, 4th bedroom, & 3 pce bath. Laundry & storage space. Great curb appeal out front, fully fenced backyard, deck w/ aluminum railings, ground level patio, shed, & oversized single detached garage. Quick access to Hwy 2, parks, & schools. A must see! (id:6769)

Bedroom 4 3.72 m X 4.06 m

Recreation room 3.79 m X 5.77 m

Family room Measurements not available

Living room 5.7 m X 4.13 m

Dining room 3.47 m X 2.55 m

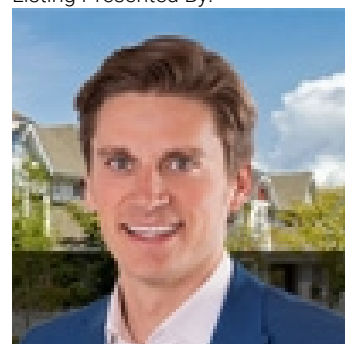
Kitchen 4.78 m X 3.53 m

Primary Bedroom 4.46 m X 3.2 m

Bedroom 2 3.12 m X 2.47 m

Bedroom 3 3.44 m X 4.23 m

Listing Presented By:



Originally Listed by:
RE/MAX Elite

<http://kevindoyle.remax.ca/>



CREA

DDF

#230, 70 Mcleod Ave , Spruce
Grove, AB,

Phone: 780-920-0550
tyson@royallepage.ca

The property information on this website is derived from the Canadian Real Estate Association's Data Distribution Facility (DDF®). DDF® references real estate listings held by various brokerage firms and franchisees. The accuracy of information is not guaranteed and should be independently verified. The trademarks REALTOR®, REALTORS® and the REALTOR® logo are controlled by The Canadian Real Estate Association (CREA) and identify real estate professionals who are members of CREA. The trademarks MLS®, Multiple Listing Service® and the associated logos are owned by CREA and identify the quality of services provided by real estate professionals who are members of CREA.