



Edmonton Alberta

\$598,700

Welcome Home! This 2,360 sqft home offers over 3300 sqft of fully developed living space, located on a large lot in the heart of the west end! Thoughtfully designed, this property seamlessly blends comfort, functionality, and privacy. The main floor boasts a bright open floor plan, featuring newer Vinyl plank flooring with fresh paint & baseboards. Upstairs, the primary suite awaits w a spa-like ensuite and a generous walk-in closet. 3 additional spacious bedrooms and a 4pc bathroom complete the upper level. You will find the 5th bedroom, a full bathroom, and a large rec space in the basement. Fire up the BBQ and enjoy your private deck overlooking the beautifully landscaped yard equipped w underground sprinklers. Completed w A/C & a large garage! (id:6769)

Family room 27 m X 25 m

Utility room 8 m X 11 m

Storage 9 m X 11 m

Bedroom 5 Measurements not available

Living room 16 m X 15 m

Dining room 16 m X 9 m

Kitchen 16 m X 11 m

Den 17 m X 12 m

Pantry 12 m X 4 m

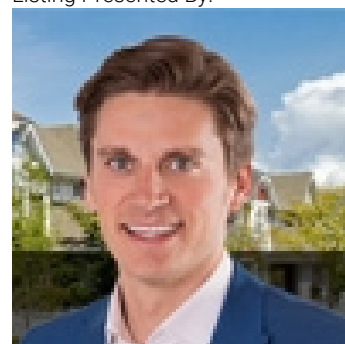
Primary Bedroom 17 m X 12 m

Bedroom 2 14 m X 10 m

Bedroom 3 12 m X 12 m

Bedroom 4 12 m X 11 m

Listing Presented By:



Originally Listed by:
RE/MAX Elite



CREA

DDF

#230, 70 Mcleod Ave , Spruce Grove, AB,

Phone: 780-920-0550
tyson@royallepage.ca

The property information on this website is derived from the Canadian Real Estate Association's Data Distribution Facility (DDF®). DDF® references real estate listings held by various brokerage firms and franchisees. The accuracy of information is not guaranteed and should be independently verified. The trademarks REALTOR®, REALTORS® and the REALTOR® logo are controlled by The Canadian Real Estate Association (CREA) and identify real estate professionals who are members of CREA. The trademarks MLS®, Multiple Listing Service® and the associated logos are owned by CREA and identify the quality of services provided by real estate professionals who are members of CREA.