



## Edmonton Alberta

\$214,900

PERFECTLY LOCATED 2 BED 2 BATH CONDO IN KING EDWARD PARK. This spacious 828 SQFT suite has everything you need and more, featuring an west facing balcony, in-suite laundry, a primary w/ a walkthrough closet & full ensuite, an open concept living room, dining area & white kitchen with granite counters, breakfast bar & a 2nd spacious bed & bath. The entire unit is drenched in natural light making it such an inviting space. The Urban Village Condo Building is all about the AMENITIES!! Right next door gives you access to the largest indoor salt water pool & whirlpool, infrared saunas, locker rooms with showers & a full gym. Take advantage of the social room with billiards, poker tables, TV's and room for those family gatherings. 2 titled parking stalls, 1 above ground right down the stairs and 1 underground w/ easy access to your unit. Close to countless amenities, public transportation, minutes away from Whyte Avenue, U of A, Downtown, Visitor parking and guest suite also available. Come see for yourself! (id:6769)

Living room 3.28 m X 4.38 m

Dining room 3.07 m X 4.1 m

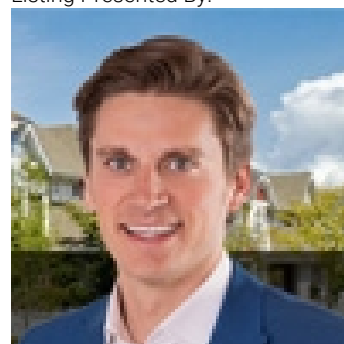
Kitchen 2.88 m X 2.86 m

Primary Bedroom 3.24 m X 3.11 m

Bedroom 2 3.45 m X 2.99 m

Laundry room Measurements not available

Listing Presented By:



Originally Listed by:  
Century 21 All Stars Realty Ltd

<http://www.michaelsells.ca/>



CREA

DDF

#230, 70 Mcleod Ave , Spruce  
Grove, AB,

Phone: 780-920-0550  
tyson@royallepage.ca

The property information on this website is derived from the Canadian Real Estate Association's Data Distribution Facility (DDF®). DDF® references real estate listings held by various brokerage firms and franchisees. The accuracy of information is not guaranteed and should be independently verified. The trademarks REALTOR®, REALTORS® and the REALTOR® logo are controlled by The Canadian Real Estate Association (CREA) and identify real estate professionals who are members of CREA. The trademarks MLS®, Multiple Listing Service® and the associated logos are owned by CREA and identify the quality of services provided by real estate professionals who are members of CREA.