



Edmonton Alberta

\$348,800

Discover Topaz, a captivating townhome complex nestled in one of North Edmonton's most coveted communities! With easy access to Anthony Henday this END unit offers a prime location and a short distance to shopping, K-9 School, Parks, and Playgrounds. As you enter you are greeted with a beautiful flex space with added storage, perfect for a home office or play area for the kids. Step up into a bright, modern open-concept main floor, where the kitchen steals the spotlight with quartz counters, white cabinets, sleek subway tile backsplash and ss appliances. Complete with a half bath and a welcoming living/dining area and added electric fireplace. Every inch drenched in natural light. Upstairs you will find the primary bedroom boasting a 3-piece ensuite, 2 more generous sized bedrooms, an additional 4 pc bath, linen closet and convenient upper floor laundry. Featuring a spacious 2nd-storey deck, equipped with gas BBQ hose bib and a double attached garage offering parking and storage. Welcome Home! (id:6769)

Family room 10'2" x 8'8"

Living room 18'2" x 13'11"

Dining room 15'1" x 9'

Kitchen 15'10" x 9'11"

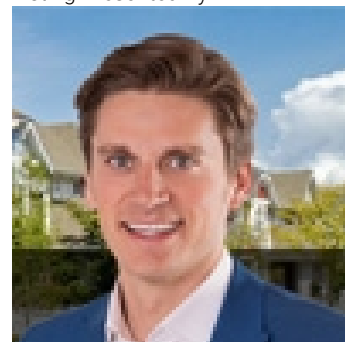
Utility room 7'3" x 3'11"

Primary Bedroom 12'11" x 11'2"

Bedroom 2 9' x 11'2"

Bedroom 3 8'11" x 12'7"

Listing Presented By:



Originally Listed by:
Century 21 All Stars Realty Ltd

<http://www.michaelsells.ca/>



Royal

Le Page Noralta Spruce Grove

#230, 70 Mcleod Ave , Spruce Grove, AB,

Phone: 780-920-0550

Fax:

tyson@royallepage.ca

The property information on this website is derived from the Canadian Real Estate Association's Data Distribution Facility (DDF®). DDF® references real estate listings held by various brokerage firms and franchisees. The accuracy of information is not guaranteed and should be independently verified. The trademarks REALTOR®, REALTORS® and the REALTOR® logo are controlled by The Canadian Real Estate Association (CREA) and identify real estate professionals who are members of CREA. The trademarks MLS®, Multiple Listing Service® and the associated logos are owned by CREA and identify the quality of services provided by real estate professionals who are members of CREA.