

Edmonton Alberta

\$463,800

This almost 1400 sf home has it all. Better than new as the landscape & fencing is done. Located in the amazing neighborhood of Paisley, close to pond/park, shopping, transit & the Paisley Dog Park! Open concept plan is perfect for those who love to entertain yet still want a lovely livable family home. Bright sunny spacious main floor features the living room w/a modern sleek linear FP & dining area. Kitchen boasts an abundance of cabinetry, stainless steel appliances, microwave hood fan & quartz counters. Roomy front entry for guests & mudrm for the kids w/a powder rm w/wainscoting. Luxury laminate flooring for everyday living+ durable tile entry ways. Upstairs has 3 bedrms incl a spacious primary bedrm w/ W/I closet & an ensuite with an O/S shower. F/Fin bsmt gives approx 2000 sf ttl living space w/a rec rm, den/ playrm/bedrm. Future bathrm. Sun soaked SW facing back yard w/a deck for outdoor entertaining. 20x20 Dbl garage. Minutes to Windermere Currents/ South Common & Queen E II. Hurry on this GEM! (id:6769)

Bedroom 4 1.7 m X 4.3 m

Laundry room Measurements not available

Recreation room 5.3 m X 3.71 m

Living room 3.23 m X 3.09 m

Dining room 3.09 m X 2.08 m

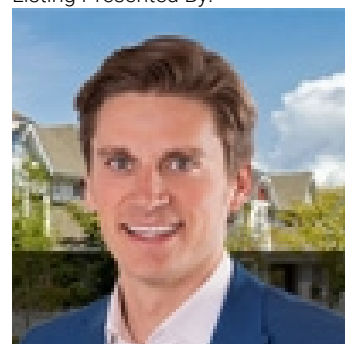
Kitchen 5.6 m X 3.4 m

Primary Bedroom 4.7 m X 3.42 m

Bedroom 2 2.59 m X 3.01 m

Bedroom 3 2.67 m X 3 m

Listing Presented By:



Originally Listed by:
RE/MAX Elite

<http://www.alangee.com/>



CREA

DDF

#230, 70 Mcleod Ave , Spruce Grove, AB,

Phone: 780-920-0550
tyson@royallepage.ca

The property information on this website is derived from the Canadian Real Estate Association's Data Distribution Facility (DDF®). DDF® references real estate listings held by various brokerage firms and franchisees. The accuracy of information is not guaranteed and should be independently verified. The trademarks REALTOR®, REALTORS® and the REALTOR® logo are controlled by The Canadian Real Estate Association (CREA) and identify real estate professionals who are members of CREA. The trademarks MLS®, Multiple Listing Service® and the associated logos are owned by CREA and identify the quality of services provided by real estate professionals who are members of CREA.