

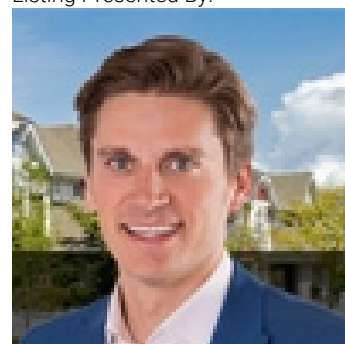


## Rural Parkland County Alberta

\$375,000

Do You Dream of Making Memories with Your Family at Your Own Lakefront Getaway? This beautiful, waterfront lake lot in WEST Point Estates is ready for you to build your dream home away from home! This 1.11 acre lot that gently slopes towards the lake has trees for privacy and a cleared building site. All water sports are welcome at Jackfish Lake, and there are great reviews from fishermen. Just 40 minutes from Edmonton, and 15 from Spruce Grove and Stony Plain, enjoy a quick ride all on pavement to your waterfront retreat. With gas and power running to the property line, all you have to do is pick your builder and see your family's dreams come to life. (id:6769)

Listing Presented By:



Originally Listed by:  
RE/MAX Elite

<http://www.thegabouryteam.com/>



CREA

DDF

#230, 70 Mcleod Ave , Spruce Grove, AB,

Phone: 780-920-0550  
tyson@royallepage.ca

The property information on this website is derived from the Canadian Real Estate Association's Data Distribution Facility (DDF®). DDF® references real estate listings held by various brokerage firms and franchisees. The accuracy of information is not guaranteed and should be independently verified. The trademarks REALTOR®, REALTORS® and the REALTOR® logo are controlled by The Canadian Real Estate Association (CREA) and identify real estate professionals who are members of CREA. The trademarks MLS®, Multiple Listing Service® and the associated logos are owned by CREA and identify the quality of services provided by real estate professionals who are members of CREA.