



Edmonton Alberta

\$474,900

Welcome to the vibrant community of Keswick! This FULLY FINISHED 1400+ sqft half duplex shows like new and is located on a very quiet street. The main floor features an open floor plan, hardwood/tile floors, gorgeous kitchen w/quartz counters and s.s. appliances, large living room w/beautiful stone fireplace, and open dining area. Upstairs you will find the primary suite w/walk-in closet and 3-pc ensuite, 2 additional bedrooms, additional 4-pc bath, and laundry area. The lower level offers an awesome rec area, den/nook, 2-pc bath, and storage space. Outside you will find the west facing private/fully landscaped yard w/large deck. Attached garage and central A/C, the list goes on! Minutes from schools, and all of the amenities of the Currents of Windermere. Nothing left to do but move in! (id:6769)

Family room 5.36 m X 4.04 m

Living room 3.04 m X 4.16 m

Dining room 2.73 m X 3.3 m

Kitchen 2.57 m X 3.78 m

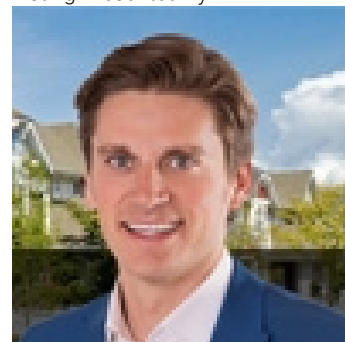
Primary Bedroom 3.68 m X 3.83 m

Bedroom 2 2.88 m X 3.58 m

Bedroom 3 2.78 m X 3.58 m

Laundry room 1.02 m X 1.77 m

Listing Presented By:



Originally Listed by:
RE/MAX Elite

<http://ryanlauber.com/>



**Royal
Le Page Noralta Spruce Grove**

#230, 70 Mcleod Ave , Spruce
Grove, AB,

Phone: 780-920-0550
Fax:
tyson@royallepage.ca

The property information on this website is derived from the Canadian Real Estate Association's Data Distribution Facility (DDF®). DDF® references real estate listings held by various brokerage firms and franchisees. The accuracy of information is not guaranteed and should be independently verified. The trademarks REALTOR®, REALTORS® and the REALTOR® logo are controlled by The Canadian Real Estate Association (CREA) and identify real estate professionals who are members of CREA. The trademarks MLS®, Multiple Listing Service® and the associated logos are owned by CREA and identify the quality of services provided by real estate professionals who are members of CREA.