



Spruce Grove Alberta

\$320,000

BRAND NEW, modern & meticulously crafted for an aesthetic atmosphere, this duplex offering 1,188 sq ft of show-home-condition living space, is selectively situated in the desirable community of Heatherglenn, where walking trails, dining, shopping & the Tri-Leisure centre are a mere minute away. An open concept main floor embraces a contemporary colour palette as vinyl plank flooring extends past the 2pc powder room, beyond the kitchen, so stylishly outfitted with brilliant recessed lighting, beautiful cabinetry & island including bar-style seating, before accenting the glorious sun-fed corner of the dining room with a relaxing view of your private fenced yard. The living room is airy and presents the warmth of a tile-encased gas fireplace. Private quarters upstairs unite 2 bedrooms serviced by a 4pc main bath, including the primary retreat, crowned with his & hers walk-in closets, and it's own full 4pc ensuite. The basement offers unfinished space for another bedroom or flex space. NEW HOME WARRANTY! (id:6769)

Living room 13'11 x 10'8

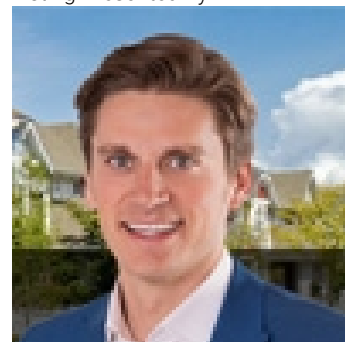
Dining room 8'10 x 8'5

Kitchen 9'6 x 8'5

Primary Bedroom 13'9 x 12'6

Bedroom 2 14'6 x 12'8

Listing Presented By:



Originally Listed by:
Royal LePage Noralta Real Estate

<http://movewithmarty.realtor/>



CREA

DDF

#230, 70 Mcleod Ave , Spruce
Grove, AB,

Phone: 780-920-0550
tyson@royallepage.ca

The property information on this website is derived from the Canadian Real Estate Association's Data Distribution Facility (DDF®). DDF® references real estate listings held by various brokerage firms and franchisees. The accuracy of information is not guaranteed and should be independently verified. The trademarks REALTOR®, REALTORS® and the REALTOR® logo are controlled by The Canadian Real Estate Association (CREA) and identify real estate professionals who are members of CREA. The trademarks MLS®, Multiple Listing Service® and the associated logos are owned by CREA and identify the quality of services provided by real estate professionals who are members of CREA.