



Spruce Grove Alberta

\$414,900

Explore all Harvest Ridge has to offer from schools, community sports, recreation and wellness facilities, shopping and an abundance of natural amenities all within walking distance. The Dover home offers the perfect blend of comfort and style. Spanning approx 1610 SQFT, this home offers a thoughtfully designed layout and modern features. As you step inside, you'll be greeted by an inviting open concept main floor that seamlessly integrates the living, dining, and kitchen areas. Abundant natural light flowing through large windows highlights the elegant laminate and vinyl flooring, creating a warm atmosphere for daily living and entertaining. Upstairs, you'll find three spacious bedrooms that provide comfortable retreats for the entire family. The primary bedroom is a true oasis, complete with an en-suite bathroom for added convenience.

****PLEASE NOTE**** PICTURES ARE OF SIMILAR HOME; ACTUAL HOME, PLANS, FIXTURES, AND FINISHES MAY VARY AND ARE SUBJECT TO CHANGE WITHOUT NOTICE. (id:6769)

Living room Measurements not available

Dining room Measurements not available

Kitchen Measurements not available

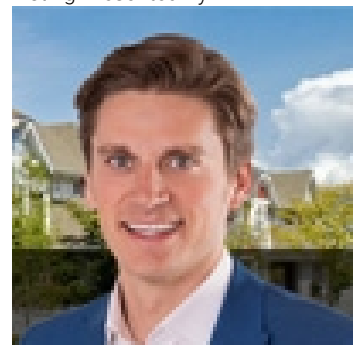
Primary Bedroom Measurements not available

Bedroom 2 Measurements not available

Bedroom 3 Measurements not available

Bonus Room Measurements not available

Listing Presented By:



Originally Listed by:
Century 21 All Stars Realty Ltd

<http://www.michaelsells.ca/>



CREA

DDF

#230, 70 Mcleod Ave , Spruce Grove, AB,

Phone: 780-920-0550
tyson@royallepage.ca

The property information on this website is derived from the Canadian Real Estate Association's Data Distribution Facility (DDF®). DDF® references real estate listings held by various brokerage firms and franchisees. The accuracy of information is not guaranteed and should be independently verified. The trademarks REALTOR®, REALTORS® and the REALTOR® logo are controlled by The Canadian Real Estate Association (CREA) and identify real estate professionals who are members of CREA. The trademarks MLS®, Multiple Listing Service® and the associated logos are owned by CREA and identify the quality of services provided by real estate professionals who are members of CREA.