



Fort Saskatchewan Alberta

\$199,900

Located on the third floor of the Manor at Southfort is this 878-square-foot two-bedroom corner unit with a unique floor plan. Step into the front entrance, which overlooks the eating area and kitchen with ample cupboard and counter space. Enjoy the pond view and green space from the living room with garden door access to the balcony. Two separate bedrooms give lots of privacy, and both bedrooms have ample closet space. The four-piece bathroom and laundry room complete this home. The condo features laminate flooring, 9' ceilings, natural lighting, central air conditioning and a heated underground titled parking stall. Extra amenities in the sister building include a hair salon, dining room, billiard room, and fitness room. A bonus is the elevator access is right across the hallway from this unit. (id:6769)

Living room 4.57 m X 3.47 m

Dining room 3.17 m X 2.44 m

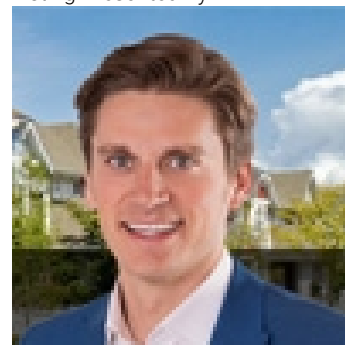
Kitchen 2.8 m X 2.68 m

Primary Bedroom 3.44 m X 2.99 m

Bedroom 2 3.35 m X 3.04 m

Laundry room 1.92 m X 1.74 m

Listing Presented By:



Originally Listed by:
RE/MAX Elite

<http://www.zucht.ca/>



CREA

DDF

#230, 70 Mcleod Ave , Spruce
Grove, AB,

Phone: 780-920-0550
tyson@royallepage.ca

The property information on this website is derived from the Canadian Real Estate Association's Data Distribution Facility (DDF®). DDF® references real estate listings held by various brokerage firms and franchisees. The accuracy of information is not guaranteed and should be independently verified. The trademarks REALTOR®, REALTORS® and the REALTOR® logo are controlled by The Canadian Real Estate Association (CREA) and identify real estate professionals who are members of CREA. The trademarks MLS®, Multiple Listing Service® and the associated logos are owned by CREA and identify the quality of services provided by real estate professionals who are members of CREA.