



Edmonton Alberta

\$1,050,000

Live life to the fullest in the Incredible One at Keswick Community! This magnificent masterpiece of modern creation originally built by one of Edmonton's Premier Builders, Kanvi Homes, has got it all! 3700 Sq ft of total living space, 4 Beds, 3.5 Baths, FULLY FINISHED WALKOUT BASEMENT, South Backing ONTO the POND, Massive Windows, Tall ceilings, Luxury finishes, High Energy Efficiency, Oversized garage, and more. This stunning home has been meticulously cared for in as close to brand new condition as you can find , AND has been thoughtfully upgraded and curated with high end Landscaping, roller shade style window coverings, and Central air conditioning making this ready to enjoy with no remaining projects! Impressive main floor features like the open riser staircase, enormous windows, pond facing balcony, and luxurious kitchen with built in Bosch appliances. And you can't miss the Awe inspiring primary suite with luxurious stand alone tub, dual sinks, huge closet, and massive tiled shower. Breathtaking! (id:6769)

Bedroom 4 3.37 m X 4.16 m

Living room 3.69 m X 6.27 m

Dining room 4.02 m X 2.6 m

Kitchen 3.51 m X 6.92 m

Den 2.4.2995

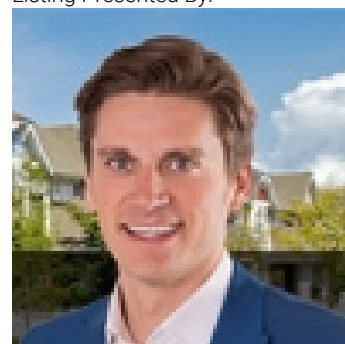
Primary Bedroom 3.79 m X 6.07 m

Bedroom 2 3.55 m X 3.6 m

Bedroom 3 4.64 m X 3.12 m

Bonus Room 4.38 m X 3.52 m

Listing Presented By:



Originally Listed by:
RE/MAX Elite

<http://www.eddydambrosio.com/>



CREA

DDF

#230, 70 Mcleod Ave , Spruce
Grove, AB,

Phone: 780-920-0550
tyson@royallepage.ca

The property information on this website is derived from the Canadian Real Estate Association's Data Distribution Facility (DDF®). DDF® references real estate listings held by various brokerage firms and franchisees. The accuracy of information is not guaranteed and should be independently verified. The trademarks REALTOR®, REALTORS® and the REALTOR® logo are controlled by The Canadian Real Estate Association (CREA) and identify real estate professionals who are members of CREA. The trademarks MLS®, Multiple Listing Service® and the associated logos are owned by CREA and identify the quality of services provided by real estate professionals who are members of CREA.