

# Rural Leduc County Alberta

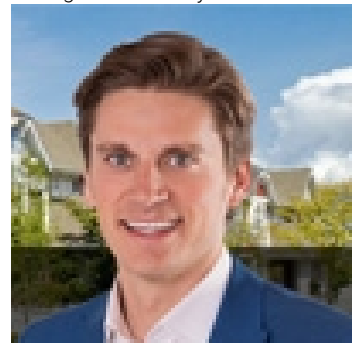
\$1,199,900

Welcome to this stunning 3,870 sq.ft. custom-built home w/ a triple car garage, perfectly situated in a quiet cul-de-sac backing onto the walking path. Designed for modern living, this home offers 5 bedrooms, 4 full bathrooms, & a thoughtfully designed open-concept layout. \*MAIN FLOOR BEDROOM w/ full bath + 2 PRIMARY SUITES w/ 5 PC ENSUITES - Perfect for multi-generational living! Discover soaring open-to-below ceilings, elegant hardwood floors, & a gas fireplace, creating a warm & welcoming space. The chef-inspired kitchen is a showstopper, featuring upgraded appliances, a gas stove, & an expansive island--perfect for entertaining! Upstairs, a bonus room open to below offers the perfect retreat. You'll find two luxurious primary suites, each w/ a walk-in closet & spa-like 5 pc ensuite, plus a private balcony overlooking the backyard & walking path. Two more secondary bedrooms & laundry complete the upper level. Step into the yard onto the 2-tier deck w/ natural gas hookup--ideal for family gatherings! (id:6769)

- Living room 16' x 17'1
- Dining room 18'11 x 13'2
- Kitchen 16'1 x 15'3
- Family room 15'11 x 17'1
- Primary Bedroom 18' x 15'11
- Bedroom 2 16'2 x 13'11
- Bedroom 3 15'1 x 13'10

- Bedroom 4 11'8 x 14'2
- Bonus Room 13'7 x 14'1
- Laundry room Measurements not available
- Bedroom 5 9'11 x 15'9
- Breakfast Measurements not available x 18 m
- Mud room 6'9 x 10'4

Listing Presented By:



Originally Listed by:  
RE/MAX Elite



**Le Page Noralta Spruce Grove**

#230, 70 Mcleod Ave , Spruce Grove, AB,

Phone: 780-920-0550  
Fax:  
tyson@royallepage.ca

The property information on this website is derived from the Canadian Real Estate Association's Data Distribution Facility (DDF®). DDF® references real estate listings held by various brokerage firms and franchisees. The accuracy of information is not guaranteed and should be independently verified. The trademarks REALTOR®, REALTORS® and the REALTOR® logo are controlled by The Canadian Real Estate Association (CREA) and identify real estate professionals who are members of CREA. The trademarks MLS®, Multiple Listing Service® and the associated logos are owned by CREA and identify the quality of services provided by real estate professionals who are members of CREA.