



## Edmonton Alberta

\$169,900

2 BED 2 BATH FULLY RENOVATED OPEN CONCEPT CONDO!! Welcome to Clairview, this 1076 SQFT sleek residence features white kitchen which showcases tons of cupboard and counter space. Step into your bright dining and living space complete with 9 ft ceilings and drenched in natural light. The primary is a bright retreat featuring a walk-through closet and ensuite bath. The second bedroom is perfect for a home office, guest suite or a growing family. Added comforts include In-suite laundry, tons of storage, gas bbq hook up, forced air heating, assigned underground parking & storage, huge balcony and access to a common gym and rec rooms with pool & tennis table! Steps away from the LRT station, close to countless amenities and local eats, and minutes away from major commuting routes. This is the perfect starter home or ideal for any investor and wont be around for long. Come see for yourself! (id:6769)

Living room 3.66 m X 4.95 m

Dining room 4.8 m X 2.82 m

Kitchen 2.98 m X 2.96 m

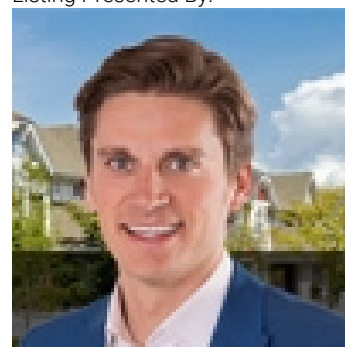
Primary Bedroom 3.01 m X 4.31 m

Bedroom 2 2.78 m X 3.58 m

Laundry room Measurements not available

Storage Measurements not available

Listing Presented By:



Originally Listed by:  
Century 21 All Stars Realty Ltd

<http://www.michaelsells.ca/>



CREA

DDF

#230, 70 Mcleod Ave , Spruce  
Grove, AB,

Phone: 780-920-0550  
[tyson@royallepage.ca](mailto:tyson@royallepage.ca)

The property information on this website is derived from the Canadian Real Estate Association's Data Distribution Facility (DDF®). DDF® references real estate listings held by various brokerage firms and franchisees. The accuracy of information is not guaranteed and should be independently verified. The trademarks REALTOR®, REALTORS® and the REALTOR® logo are controlled by The Canadian Real Estate Association (CREA) and identify real estate professionals who are members of CREA. The trademarks MLS®, Multiple Listing Service® and the associated logos are owned by CREA and identify the quality of services provided by real estate professionals who are members of CREA.