

## Edmonton Alberta

\$214,900

Welcome to this beautifully maintained 2-bedroom, 2-bathroom corner unit offering peace, privacy, and an abundance of natural light. Enjoy stunning west/northwest views and evening sunsets from the spacious balcony—perfect for unwinding after a busy day. Inside, the open-concept kitchen boasts modern upgrades including stainless steel appliances and elegant granite countertops. The bright living room features large windows on two sides, and both bedrooms also offer generous windows, creating a warm and airy atmosphere throughout. Each bathroom has both a bathtub and a shower. Additional highlights include in-suite laundry and storage, a secure heated underground parking stall and a separate storage unit. This pet-friendly building is ideally located within walking distance to the Clareview Rec Centre, bus/LRT, public library, schools, shopping and scenic walking/biking trails. With quick access to the Yellowhead and Anthony Henday freeways, commuting is a breeze. Plus, your condo fees cover all utilities! (id:6769)

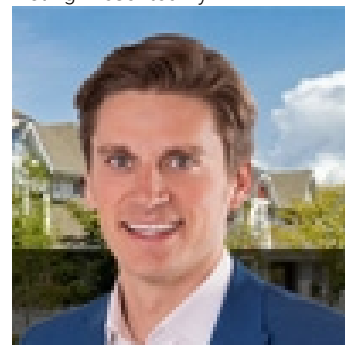
Living room 3.98 m X 5.14 m

Kitchen 3.35 m X 3.44 m

Primary Bedroom 3.5 m X 3.08 m

Bedroom 2 3.58 m X 2.68 m

Listing Presented By:



Originally Listed by:  
RE/MAX Elite

<https://hermanhelps.ca/>



**Royal**

**Le Page Noralta Spruce Grove**

#230, 70 Mcleod Ave , Spruce Grove, AB,

Phone: 780-920-0550

Fax:

tyson@royallepage.ca

The property information on this website is derived from the Canadian Real Estate Association's Data Distribution Facility (DDF®). DDF® references real estate listings held by various brokerage firms and franchisees. The accuracy of information is not guaranteed and should be independently verified. The trademarks REALTOR®, REALTORS® and the REALTOR® logo are controlled by The Canadian Real Estate Association (CREA) and identify real estate professionals who are members of CREA. The trademarks MLS®, Multiple Listing Service® and the associated logos are owned by CREA and identify the quality of services provided by real estate professionals who are members of CREA.