



Edmonton Alberta

\$99,900

STUNNING RIVER VALLEY VIEWS! Centrally located, THE VIEWPOINT is walking distance to all amenities including the COMMONWEALTH STADIUM, LRT & public transportation, Italian Centre, restaurants, shopping and just a short commute to Macewan University and the Downtown core. Airy and bright, you'll appreciate the functional floor plan and neutral tones throughout this large 1 Bed + 1 Bath condo. Some of the highlights include newer laminate flooring, updated bathroom, NEW ELEVATORS in the building and an East facing balcony with unobstructed views of the river valley. This unit comes complete with an underground parking stall & all utilities are included in the condo fee. EXCELLENT INVESTMENT! (id:6769)

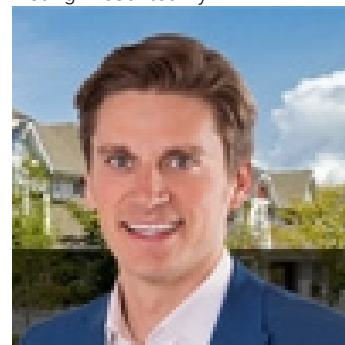
Living room 4.34 m X 5.97 m

Dining room 2.31 m X 5.3 m

Kitchen 1.83 m X 2.2 m

Primary Bedroom 3.27 m X 4.65 m

Listing Presented By:



Originally Listed by:
RE/MAX Elite

<http://www.jennynarine.ca/>



Royal

Le Page Noralta Spruce Grove

#230, 70 Mcleod Ave , Spruce
Grove, AB,

Phone: 780-920-0550

Fax:

tyson@royallepage.ca

The property information on this website is derived from the Canadian Real Estate Association's Data Distribution Facility (DDF®). DDF® references real estate listings held by various brokerage firms and franchisees. The accuracy of information is not guaranteed and should be independently verified. The trademarks REALTOR®, REALTORS® and the REALTOR® logo are controlled by The Canadian Real Estate Association (CREA) and identify real estate professionals who are members of CREA. The trademarks MLS®, Multiple Listing Service® and the associated logos are owned by CREA and identify the quality of services provided by real estate professionals who are members of CREA.