



Edmonton Alberta

\$229,900

This Spacious 3 BEDROOM condo, is perfectly located in the quiet Southwest community of Rutherford. With over 1000 SqFt of open concept living space, this is the perfect home for any first time buyer or downsizer. The bright living room is filled with natural light leading into your inviting kitchen and dining space. Prep your favourite meal in your sleek kitchen with newer ss appliances, tons of counter space, and eat up breakfast bar, what more could you ask for? The Large south-facing balcony w/ gas BBQ line is perfect for enjoying those summer days. Step into your spacious primary bdrm with walk-through closet & ensuite bath with glass shower door. Two Additional generous sized bdrms are ideal for a growing family, guest suite or home office. Private, quiet setting, above rarely used party/utility rooms. In-suite laundry, titled UG stall w/ storage cage. Amenities: exercise room, party room, guest suite. Quick access to countless amenities, schools and Anthony Henday. Welcome home! (id:6769)

Living room 15'11" x 12'7"

Dining room 8'8" x 10'8"

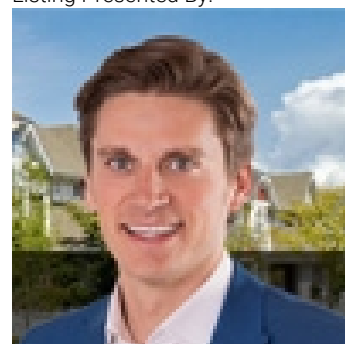
Kitchen 8'1" x 9'4"

Primary Bedroom 12'8" x 10'4"

Bedroom 2 16'2" x 10'9"

Bedroom 3 8'7" x 9'7"

Listing Presented By:



Originally Listed by:
Century 21 All Stars Realty Ltd

<http://www.michaelsells.ca/>



CREA

DDF

#230, 70 Mcleod Ave , Spruce Grove, AB,

Phone: 780-920-0550
tyson@royallepage.ca

The property information on this website is derived from the Canadian Real Estate Association's Data Distribution Facility (DDF®). DDF® references real estate listings held by various brokerage firms and franchisees. The accuracy of information is not guaranteed and should be independently verified. The trademarks REALTOR®, REALTORS® and the REALTOR® logo are controlled by The Canadian Real Estate Association (CREA) and identify real estate professionals who are members of CREA. The trademarks MLS®, Multiple Listing Service® and the associated logos are owned by CREA and identify the quality of services provided by real estate professionals who are members of CREA.