



## Edmonton Alberta

\$855,000

Welcome home to Ambleside, and this 2249 ft<sup>2</sup> 2 Storey Home, on a terrific and Sunny Corner lot with unobstructed East, South and West Sunshine all day long. Built by Kanvi Homes, this home includes a finished basement and 2 Beds Up and 1 in the basement. 3.5 baths in total. Nestled in the heart of SW Edmonton, Ambleside is waking distance to Currents of Windermere and ALL Amenities. School, Green Spaces, and trails are all out your front door. (id:6769)

**Bedroom 3** Measurements not available

**Living room** Measurements not available

**Dining room** Measurements not available

**Kitchen** Measurements not available

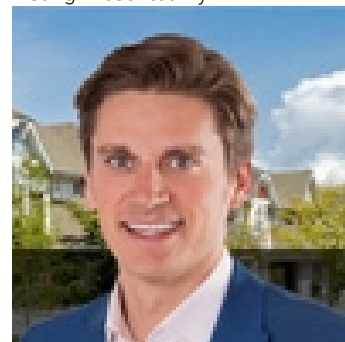
**Primary Bedroom** Measurements not available

**Bedroom 2** Measurements not available

**Bonus Room** Measurements not available

**Laundry room** Measurements not available

Listing Presented By:



Originally Listed by:  
RE/MAX Elite

<http://www.edsellshomes.ca/>



CREA

DDF

#230, 70 Mcleod Ave , Spruce Grove, AB,

Phone: 780-920-0550  
tyson@royallepage.ca

The property information on this website is derived from the Canadian Real Estate Association's Data Distribution Facility (DDF®). DDF® references real estate listings held by various brokerage firms and franchisees. The accuracy of information is not guaranteed and should be independently verified. The trademarks REALTOR®, REALTORS® and the REALTOR® logo are controlled by The Canadian Real Estate Association (CREA) and identify real estate professionals who are members of CREA. The trademarks MLS®, Multiple Listing Service® and the associated logos are owned by CREA and identify the quality of services provided by real estate professionals who are members of CREA.