



## Edmonton Alberta

\$210,000

PRICED TO SELL | PET FRIENDLY | GREAT LOCATION | 2 BEDROOMS | 2 BATHROOMS | BALCONY | UNDERGROUND PARKING | LAMINATE FLOORING | INSUITE LAUNDRY Discover the perfect blend of comfort & convenience in this stunning 2-bedroom, 2-bathroom unit. Located on a quiet, south-facing residential street, this bright & spacious condo offers an enhanced lifestyle w/ underground parking. The dining & living rooms feature elegant laminate flooring, while the kitchen boasts ample counterspace, abundant cabinets, & countertop. Open concept kitchen/dining/living room opens to a sunny south-facing deck. The primary bedroom includes a walk-through closet leading to a 3-piece bathroom. The 2nd bedroom is complemented by an adjoining 4-piece bathroom. This pet-friendly building offers fantastic amenities, including a social room & a well-equipped gym. The condo fee of \$408 covers heat & water. With easy access to Henday, shopping, restaurants, parks, & trails, this is an opportunity to elevate your living experience. (id:6769)

Living room 4.43 m X 5.25 m

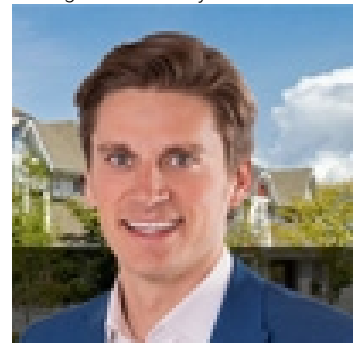
Dining room 2.74 m X 3.43 m

Kitchen 2.6 m X 2.46 m

Primary Bedroom 3.49 m X 3.39 m

Bedroom 2 3.7 m X 3.19 m

Listing Presented By:



Originally Listed by:  
RE/MAX Elite

<https://erickyip.com/>



CREA

DDF

#230, 70 Mcleod Ave , Spruce  
Grove, AB,

Phone: 780-920-0550  
tyson@royallepage.ca

The property information on this website is derived from the Canadian Real Estate Association's Data Distribution Facility (DDF®). DDF® references real estate listings held by various brokerage firms and franchisees. The accuracy of information is not guaranteed and should be independently verified. The trademarks REALTOR®, REALTORS® and the REALTOR® logo are controlled by The Canadian Real Estate Association (CREA) and identify real estate professionals who are members of CREA. The trademarks MLS®, Multiple Listing Service® and the associated logos are owned by CREA and identify the quality of services provided by real estate professionals who are members of CREA.