



Fort Saskatchewan Alberta

\$187,700

LOOKING FOR an INVESTMENT? Then this spacious 1 bedroom unit in The Manor at Southfort is the right fit! Features a nice open floorplan with flex area that can be used as den, reading area or whatever extra space you need. Located within walking distance to playgrounds, Dow Centennial Centre, restaurants, shopping, services and retail, this building has access to the facilities at The Gardens next door. Located on the third floor, this unit comes with all appliances and central air conditioning - a plus in the warmer months. Condo fees include heat and water. Convenient access to Hwy 15 & Hwy 21. Just move on in - and enjoy your relaxing lifestyle! Other units available for sale in building - a great INVESTMENT opportunity! TITLE UNDERGROUND PARKING STALL INCLUDED! (id:6769)

Living room 429 m X 3.61 m

Dining room 3.61 m X 1.32 m

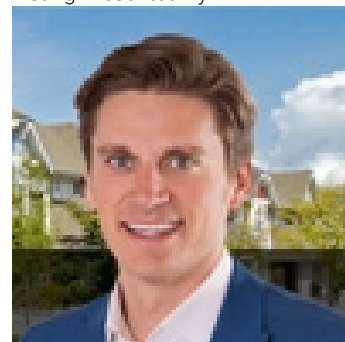
Kitchen 2.59 m X 2.2 m

Den 4.3 m X 3.87 m

Primary Bedroom 4.26 m X 3.12 m

Laundry room 2.12 m X 0.73 m

Listing Presented By:



Originally Listed by:
Royal LePage Noralta Real Estate

<http://www.homestodyfor.com/>



CREA

DDF

#230, 70 Mcleod Ave , Spruce
Grove, AB,

Phone: 780-920-0550
tyson@royallepage.ca

The property information on this website is derived from the Canadian Real Estate Association's Data Distribution Facility (DDF®). DDF® references real estate listings held by various brokerage firms and franchisees. The accuracy of information is not guaranteed and should be independently verified. The trademarks REALTOR®, REALTORS® and the REALTOR® logo are controlled by The Canadian Real Estate Association (CREA) and identify real estate professionals who are members of CREA. The trademarks MLS®, Multiple Listing Service® and the associated logos are owned by CREA and identify the quality of services provided by real estate professionals who are members of CREA.