



REALTOR



MLS#669899

1335 Bear Mountain Parkway 314 Langford British Columbia

\$634,000

This stylish 2-bed 2-bath + den condo is nestled in the serene beauty of Bear Mountain. Offering over 1000 sq ft of interior space, this home showcases exceptional views to the southeast that'll make you feel like you're on a year-round holiday. Step into a sun-soaked open-concept layout accentuated by soft natural light. The thoughtful design includes a handy den/office that also offers generous closet storage space. The primary bedroom is a haven of relaxation replete with a walk-through closet & a luxurious ensuite bathroom featuring a separate shower and deep soaker tub. The open kitchen forms the heart of this home, glistening with SS appliances & granite countertops. Value-added features include in-suite laundry, secure parking, a storage locker & pets are welcome. Venture out for a walk in the mountains, hit the gym, meet a friend for golf, savour a morning coffee on your quiet golf course view balcony or entertain friends in your multifunctional space.

Bear Mountain has it all! (id:6769)

Balcony 23 ft X 7 ft

Laundry room 5 ft X 4 ft

Den 12' x 6'

Bedroom 10' x 9'

Ensuite 4-Piece

Bathroom 4-Piece

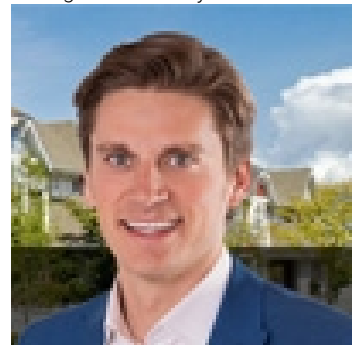
Primary Bedroom 13' x 11'

Kitchen 10' x 9'

Living room 17 ft X 16 ft

Entrance 12 ft X 5 ft

Listing Presented By:



Originally Listed by:
RE/MAX Camosun

<http://www.alexrose.ca/>



CREA

DDF

#230, 70 Mcleod Ave , Spruce
Grove, AB,

Phone: 780-920-0550
tyson@royallepage.ca

The property information on this website is derived from the Canadian Real Estate Association's Data Distribution Facility (DDF®). DDF® references real estate listings held by various brokerage firms and franchisees. The accuracy of information is not guaranteed and should be independently verified. The trademarks REALTOR®, REALTORS® and the REALTOR® logo are controlled by The Canadian Real Estate Association (CREA) and identify real estate professionals who are members of CREA. The trademarks MLS®, Multiple Listing Service® and the associated logos are owned by CREA and identify the quality of services provided by real estate professionals who are members of CREA.