



Fort Saskatchewan Alberta

\$269,900

Very clean and well taken care of 2 bedroom 2 bathroom condo in the Parkview Manor complex in Fort Saskatchewan. The main floor has a great floor plan with the kitchen and dining area leading to a living room with gas fireplace with Mantel. The primary bedroom is spacious in size with a 4 piece ensuite bathroom. The second bedroom is large in size and the 4 piece bathroom adjacent to it. The living room has a door leading to a huge balcony that you will not find in any other units in the building. This condo complex is very well managed and very well taken care of and is in a great location in the Sherridon Heights neighborhood. The sale includes 5 appliances, 1 titled underground parking stall #61, and storage cage in front of it. The complex is walking distance to all shopping, parks, public transit, fort legion, downtown, golf course, and the curling rink. The seller is relocating to another province and is flexible with the closing date. (id:6769)

Living room 3.71 m X 4.98 m

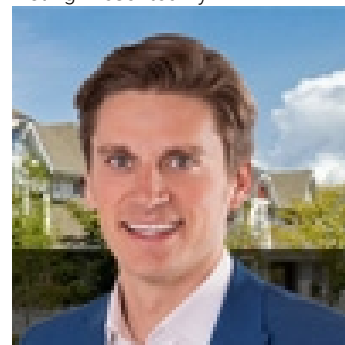
Dining room 1.7 m X 3.7 m

Kitchen 4 m X 3.37 m

Primary Bedroom 3.26 m X 3.94 m

Bedroom 2 2.93 m X 3.38 m

Listing Presented By:



Originally Listed by:
RE/MAX River City

<http://www.johnstonhomes.ca/>



Royal

Le Page Noralta Spruce Grove

#230, 70 Mcleod Ave , Spruce Grove, AB,

Phone: 780-920-0550

Fax:

tyson@royalpage.ca

The property information on this website is derived from the Canadian Real Estate Association's Data Distribution Facility (DDF®). DDF® references real estate listings held by various brokerage firms and franchisees. The accuracy of information is not guaranteed and should be independently verified. The trademarks REALTOR®, REALTORS® and the REALTOR® logo are controlled by The Canadian Real Estate Association (CREA) and identify real estate professionals who are members of CREA. The trademarks MLS®, Multiple Listing Service® and the associated logos are owned by CREA and identify the quality of services provided by real estate professionals who are members of CREA.