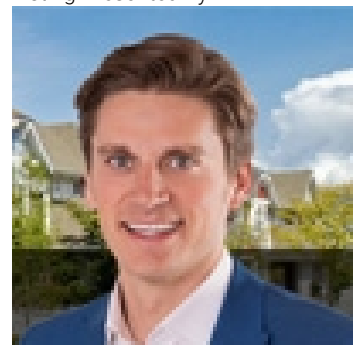


# Fort Saskatchewan Alberta

\$247,500

Build your dream home on this south facing 40 ft pocket lot intended for a WALKOUT basement in the community of South Point, Fort Saskatchewan. The lot backs onto a pond & provides good privacy behind the home. lot measures 15.24m frontage & 37.42m depth Walking paths close by leading to an outdoor skating rink & biking paths. Close to schools, DOW Centre & shopping. Good access to Hwy 21. (id:6769)

Listing Presented By:



Originally Listed by:  
RE/MAX Real Estate

<http://www.gibbons-remax.com/>



CREA

DDF

#230, 70 Mcleod Ave , Spruce Grove, AB,

Phone: 780-920-0550  
tyson@royallepage.ca