



Edmonton Alberta

\$225,000

Welcome to South Terwillegar! This Air Conditioned TWO BEDROOM suite is a generous 893 SqFt. One UNDERGROUND stall and one above grade parking stall. Walk through the front door of this gorgeous home and you are welcomed by an open concept kitchen & living space. Enjoy a modern kitchen offering large Granite countertop bar and substantial cupboard storage + stainless steel appliances. Featuring in-suite laundry with stacked washer & dryer. Located in South Edmonton, this unit is within walking distance to bus stops, shops, schools and grocery stores. Easy access to parks, ponds, trails, Anthony Henday and the airport. Ideal for first-time buyers or investors! Builder measurements at purchase were 960 SQFT. (id:6769)

Living room 5.8 m X 5.68 m

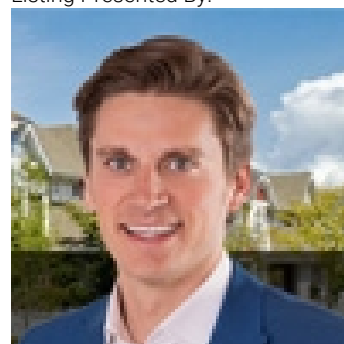
Dining room Measurements not available

Kitchen 2.54 m X 3.29 m

Primary Bedroom 4.37 m X 3.15 m

Bedroom 2 4.15 m X 2.96 m

Listing Presented By:



Originally Listed by:
RE/MAX Elite

<http://www.riverbendricky.com/>



Royal

Le Page Noralta Spruce Grove

#230, 70 Mcleod Ave , Spruce Grove, AB,

Phone: 780-920-0550

Fax:

tyson@royallepage.ca

The property information on this website is derived from the Canadian Real Estate Association's Data Distribution Facility (DDF®). DDF® references real estate listings held by various brokerage firms and franchisees. The accuracy of information is not guaranteed and should be independently verified. The trademarks REALTOR®, REALTORS® and the REALTOR® logo are controlled by The Canadian Real Estate Association (CREA) and identify real estate professionals who are members of CREA. The trademarks MLS®, Multiple Listing Service® and the associated logos are owned by CREA and identify the quality of services provided by real estate professionals who are members of CREA.