



## Edmonton Alberta

\$579,800

BACKS ONTO POND, WALK OUT BASEMENT, LOWEST PRICE IN SOUTH EDMONTON! Breathtaking views of the pond, southwest backyard exposure. Walk out basement that is fully finished and professionally finished, with 9-foot ceilings. LOWEST PRICED HOME IN SOUTH EDMONTON, BACKING ONTO POND AND WITH WALKOUT BASEMENT. Large pie lot, quiet cul-de-sac location. Giant deck (10 feet X 20 feet). Central air conditioning. 3 bedrooms, 3 full baths. Open floor plan, main floor family room. Sunny and bright big windows throughout. This fine home shows ABSOLUTELY IMMACULATE, PRIDE OF OWNERSHIP. Large patio, supported by 6 piles. Upgraded wiring throughout. Newer shingles, newer HWT. Garage has floor drain and electric furnace. Prepare to be impressed! (id:6769)

Bedroom 3 5.08 m X 3.62 m

Recreation room 9.56 m X 3.59 m

Cold room 4.06 m X 1.23 m

Laundry room 5.38 m X 4.16 m

Living room 5.16 m X 2.85 m

Dining room 3.84 m X 3.67 m

Kitchen 3.38 m X 2.75 m

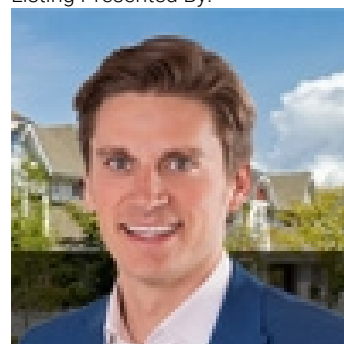
Family room 4.33 m X 3.44 m

Primary Bedroom 4.7 m X 4.09 m

Bedroom 2 3.95 m X 3.07 m

Breakfast 3.69 m X 2.24 m

Listing Presented By:



Originally Listed by:  
RE/MAX Elite

<http://www.peterdschalin.com/>



CREA

DDF

#230, 70 Mcleod Ave , Spruce  
Grove, AB,

Phone: 780-920-0550  
tyson@royallepage.ca

The property information on this website is derived from the Canadian Real Estate Association's Data Distribution Facility (DDF®). DDF® references real estate listings held by various brokerage firms and franchisees. The accuracy of information is not guaranteed and should be independently verified. The trademarks REALTOR®, REALTORS® and the REALTOR® logo are controlled by The Canadian Real Estate Association (CREA) and identify real estate professionals who are members of CREA. The trademarks MLS®, Multiple Listing Service® and the associated logos are owned by CREA and identify the quality of services provided by real estate professionals who are members of CREA.