



## Edmonton Alberta

\$539,998

Welcome to the vibrant community of Langdale in Windermere! This unique condo complex offers detached single family homes in a private community. This 1723 sqft 2-storey features a very open floor plan, great kitchen w/s.s. appliances, large island w/quartz counters, vinyl flooring throughout, and wide open living/dining areas. Upstairs you will find the spacious primary suite w/4-pc ensuite and walk-in closet, 3 additional bedrooms, additional 5-pc bath, and laundry. Completely turnkey w/full landscaping, deck, window coverings, attached garage, and more. Located minutes from schools, shopping, and all the great amenities Windermere has to offer. Great value in this family home! (id:6769)

Living room 3.2 m X 3.77 m

Dining room 3.11 m X 3.77 m

Kitchen 5.41 m X 2.6 m

Primary Bedroom 3.73 m X 4.04 m

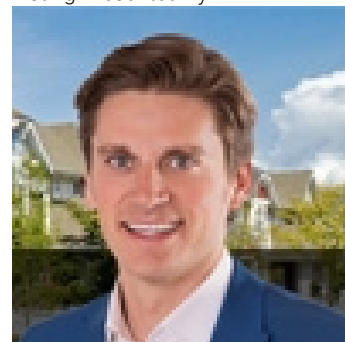
Bedroom 2 3.11 m X 3.77 m

Bedroom 3 3.08 m X 3.4 m

Bedroom 4 3.06 m X 3.12 m

Laundry room 1.01 m X 1.25 m

Listing Presented By:



Originally Listed by:  
RE/MAX Elite

<http://ryanlauber.com/>



**Royal  
Le Page Noralta Spruce Grove**

#230, 70 Mcleod Ave , Spruce  
Grove, AB,

Phone: 780-920-0550  
Fax:  
[tyson@royallepage.ca](mailto:tyson@royallepage.ca)

The property information on this website is derived from the Canadian Real Estate Association's Data Distribution Facility (DDF®). DDF® references real estate listings held by various brokerage firms and franchisees. The accuracy of information is not guaranteed and should be independently verified. The trademarks REALTOR®, REALTORS® and the REALTOR® logo are controlled by The Canadian Real Estate Association (CREA) and identify real estate professionals who are members of CREA. The trademarks MLS®, Multiple Listing Service® and the associated logos are owned by CREA and identify the quality of services provided by real estate professionals who are members of CREA.