



## Fort Saskatchewan Alberta

\$354,000

INVESTOR ALERT! This half-duplex in Fort Saskatchewan is a turnkey rental opportunity with excellent income potential - or it could also be an excellent starter home. The open-concept main floor plan includes an upstairs with master bedroom and ensuite plus two bedrooms. The main floor features a bright living area with kitchen and dining flowing together, offering a functional layout. Patio doors lead to a fenced backyard, great for enjoyment or home gardening. Laundry in the unfinished basement with plenty of storage room and future development potential. A single attached garage works for year-round appeal. Home is located close to schools, amenities, Dow Centennial Centre, retail and restaurants. This location has easy access to Highways 21 and 15 and with a short commute to Edmonton and Alberta's Industrial Heartland this property has proven, steady rental demand - or would provide space for a young family to grow into. (id:6769)

Living room 3.48 m X 4.01 m

Dining room 2.33 m X 2.7 m

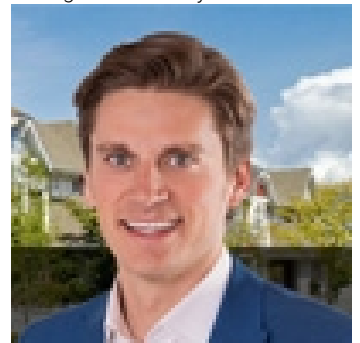
Kitchen 2.97 m X 3.08 m

Primary Bedroom 3.82 m X 3.37 m

Bedroom 2 2.86 m X 3.41 m

Bedroom 3 2.84 m X 3.27 m

Listing Presented By:



Originally Listed by:  
Logic Realty



**Royal**

**Le Page Noralta Spruce Grove**

#230, 70 Mcleod Ave , Spruce  
Grove, AB,

Phone: 780-920-0550

Fax:

tyson@royallepage.ca

The property information on this website is derived from the Canadian Real Estate Association's Data Distribution Facility (DDF®). DDF® references real estate listings held by various brokerage firms and franchisees. The accuracy of information is not guaranteed and should be independently verified. The trademarks REALTOR®, REALTORS® and the REALTOR® logo are controlled by The Canadian Real Estate Association (CREA) and identify real estate professionals who are members of CREA. The trademarks MLS®, Multiple Listing Service® and the associated logos are owned by CREA and identify the quality of services provided by real estate professionals who are members of CREA.